

**STAR**

**JEPPESEN** 26 MAY 00 **10-2**

**LAHORE, PAKISTAN**

**LAHORE**

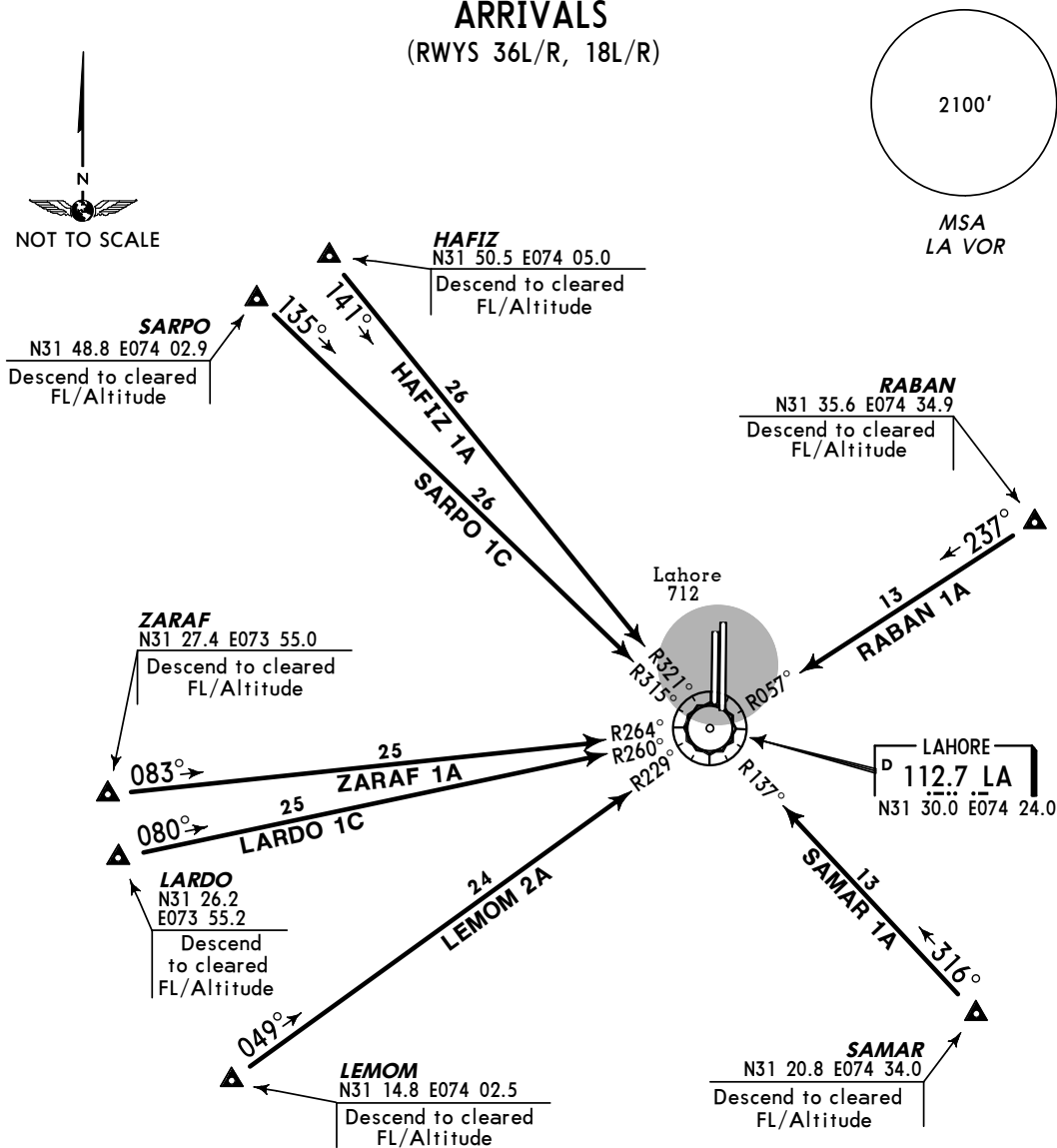
ATIS **126.3**

TRANS LEVEL: FL50  
TRANS ALT: 3000'

**HAFIZ ONE ALFA (HAFIZ 1A), LARDO ONE CHARLIE (LARDO 1C)  
LEMOM TWO ALFA (LEMOM 2A) RABAN ONE ALFA (RABAN 1A)  
SAMAR ONE ALFA (SAMAR 1A), SARPO ONE CHARLIE (SARPO 1C)  
ZARAF ONE ALFA (ZARAF 1A)**

**ARRIVALS**

(RWYS 36L/R, 18L/R)



All STARs include minimum noise routes established to reduce noise disturbance to the city around the airport.

STAR	ROUTING
<b>HAFIZ 1A</b>	Intercept LA R-321 inbound to LA VORDME. Descend to cleared FL/altitude.
<b>LARDO 1C</b> PPR ONLY	Intercept LA R-260 inbound to LA VORDME. Descend to cleared FL/altitude.
<b>LEMOM 2A</b>	Intercept LA R-229 inbound to LA VORDME. Descend to cleared FL/altitude.
<b>RABAN 1A</b>	Intercept LA R-057 inbound to LA VORDME. Descend to cleared FL/altitude.
<b>SAMAR 1A</b>	Intercept LA R-137 inbound to LA VORDME. Descend to cleared FL/altitude.
<b>SARPO 1C</b> PPR ONLY	Intercept LA R-315 inbound to LA VORDME. Descend to cleared FL/altitude.
<b>ZARAF 1A</b>	Intercept LA R-264 inbound to LA VORDME. Descend to cleared FL/altitude.

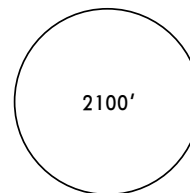
**SID**

**JEPPesen** 26 MAY 00 (10-3)

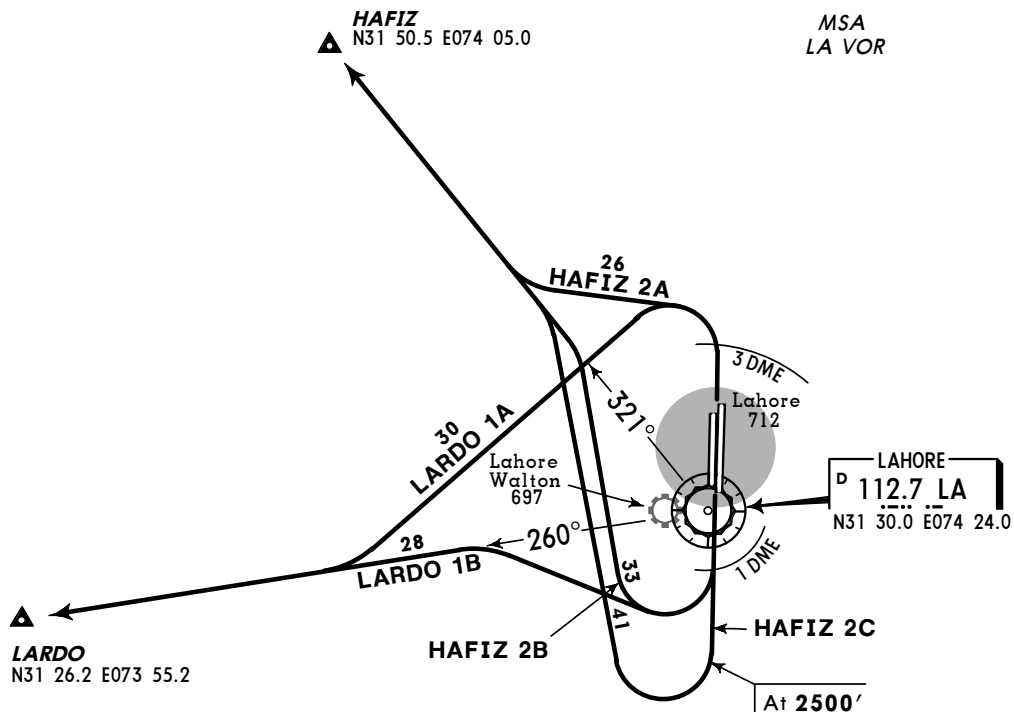
**LAHORE, PAKISTAN**  
LAHORE

TRANS LEVEL: FL50  
TRANS ALT: 3000'

**HAFIZ TWO ALFA (HAFIZ 2A), HAFIZ TWO BRAVO (HAFIZ 2B)  
HAFIZ TWO CHARLIE (HAFIZ 2C), LARDO ONE ALFA (LARDO 1A)  
LARDO ONE BRAVO (LARDO 1B)  
DEPARTURES  
(RWYS 36L/R, 18L/R)**



MSA  
LA VOR



All SIDs include minimum noise routes established to reduce noise disturbance to the city around the airport.

SID	RWY	ROUTING
<b>HAFIZ 2A</b>	<b>36L/R</b>	At LA 3 DME turn LEFT, intercept LA R-321 to Hafiz Int.
<b>HAFIZ 2B</b> When no flying at Lahore Walton	<b>18L/R</b>	At LA 1 DME turn RIGHT, intercept LA R-321 to Hafiz Int.
<b>HAFIZ 2C</b> When flying in progress at Lahore Walton		Maintain runway heading until passing <b>2500'</b> , turn RIGHT, intercept LA R-321 to Hafiz Int.
<b>LARDO 1A</b> PPR ONLY	<b>36L/R</b>	At LA 3 DME turn LEFT, intercept LA R-260 to Lardo Int.
<b>LARDO 1B</b> PPR ONLY	<b>18L/R</b>	At LA 1 DME turn RIGHT, intercept LA R-260 to Lardo Int.

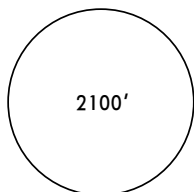
**SID**

**JEPPESEN** 26 MAY 00 **10-3A**

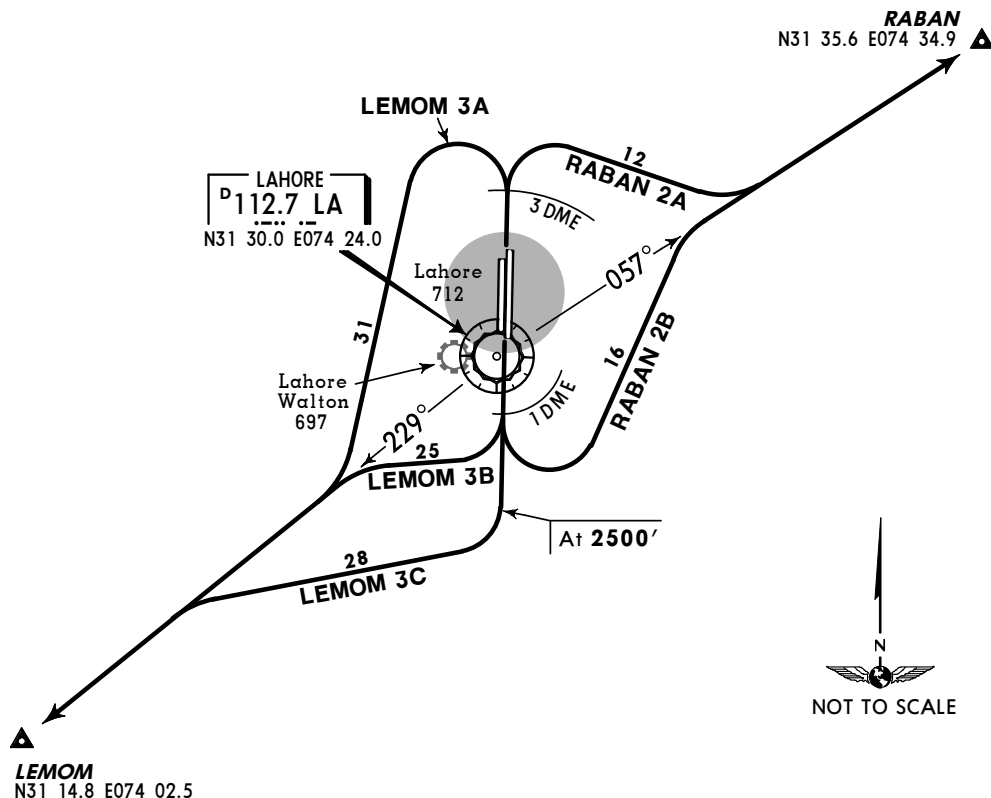
**LAHORE, PAKISTAN**  
LAHORE

TRANS LEVEL: FL50  
TRANS ALT: 3000'

**LEMOM THREE ALFA (LEMOM 3A)**  
**LEMOM THREE BRAVO (LEMOM 3B)**  
**LEMOM THREE CHARLIE (LEMOM 3C)**  
**RABAN TWO ALFA (RABAN 2A)**  
**RABAN TWO BRAVO (RABAN 2B)**  
**DEPARTURES**  
(RWYS 36L/R, 18L/R)



MSA  
LA VOR



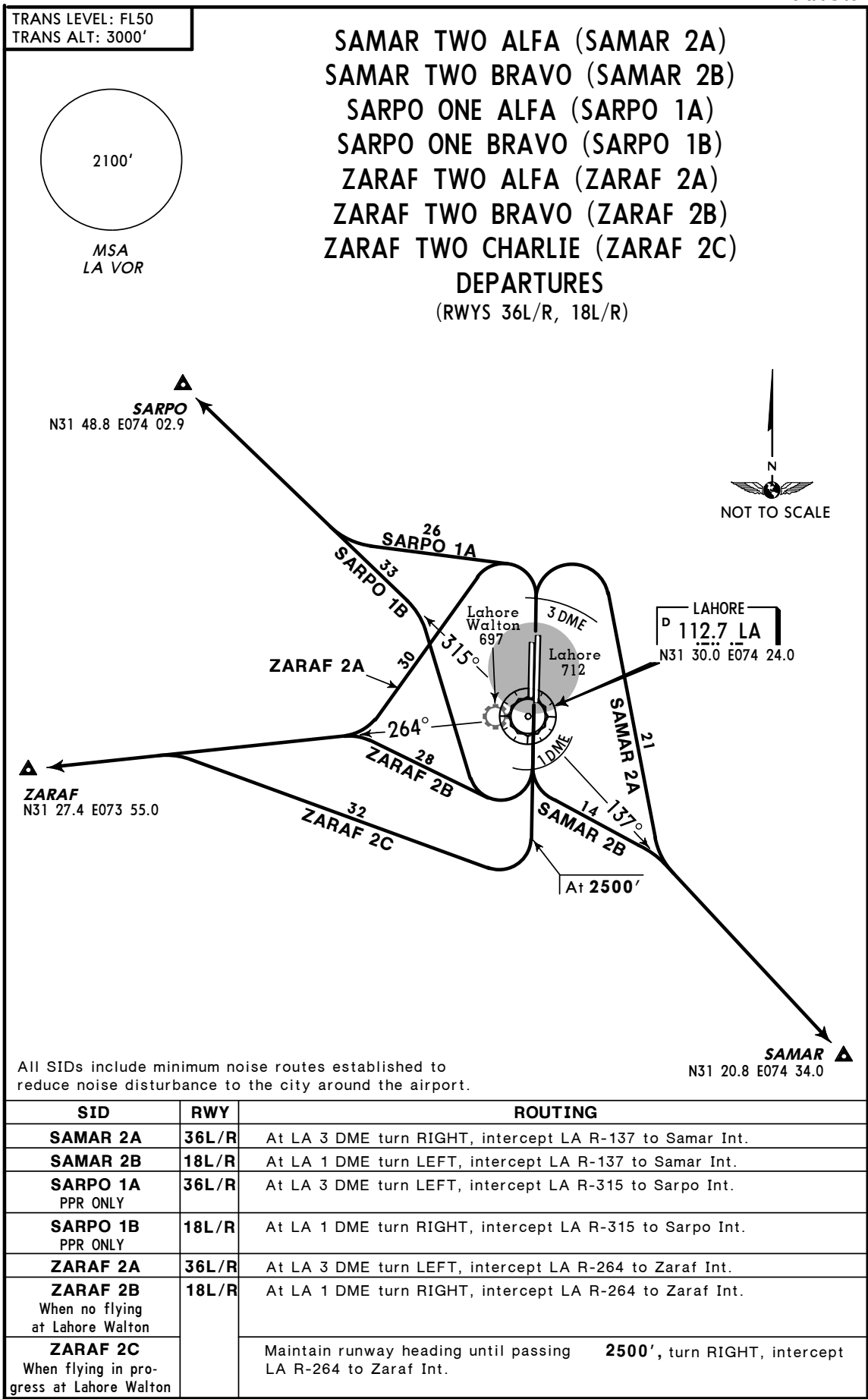
All SIDs include minimum noise routes established to reduce noise disturbance to the city around the airport.

SID	RWY	ROUTING
<b>LEMOM 3A</b>	<b>36L/R</b>	At LA 3 DME turn LEFT, intercept LA R-229 to Lemom Int.
<b>LEMOM 3B</b> When no flying at Lahore Walton	<b>18L/R</b>	At LA 1 DME turn RIGHT, intercept LA R-229 to Lemom Int.
<b>LEMOM 3C</b> When flying in progress at Lahore Walton		Maintain runway heading until passing <b>2500'</b> , turn RIGHT, intercept LA R-229 to Lemom Int.
<b>RABAN 2A</b>	<b>36L/R</b>	At LA 3 DME turn RIGHT, intercept LA R-057 to Raban Int.
<b>RABAN 2B</b>	<b>18L/R</b>	At LA 1 DME turn LEFT, intercept LA R-057 to Raban Int.

**SID**

**JEPPESEN** 26 MAY 00 **10-3B**

**LAHORE, PAKISTAN**  
LAHORE



CHANGES: SARPO SIDs & text note establ; chart redrawn.

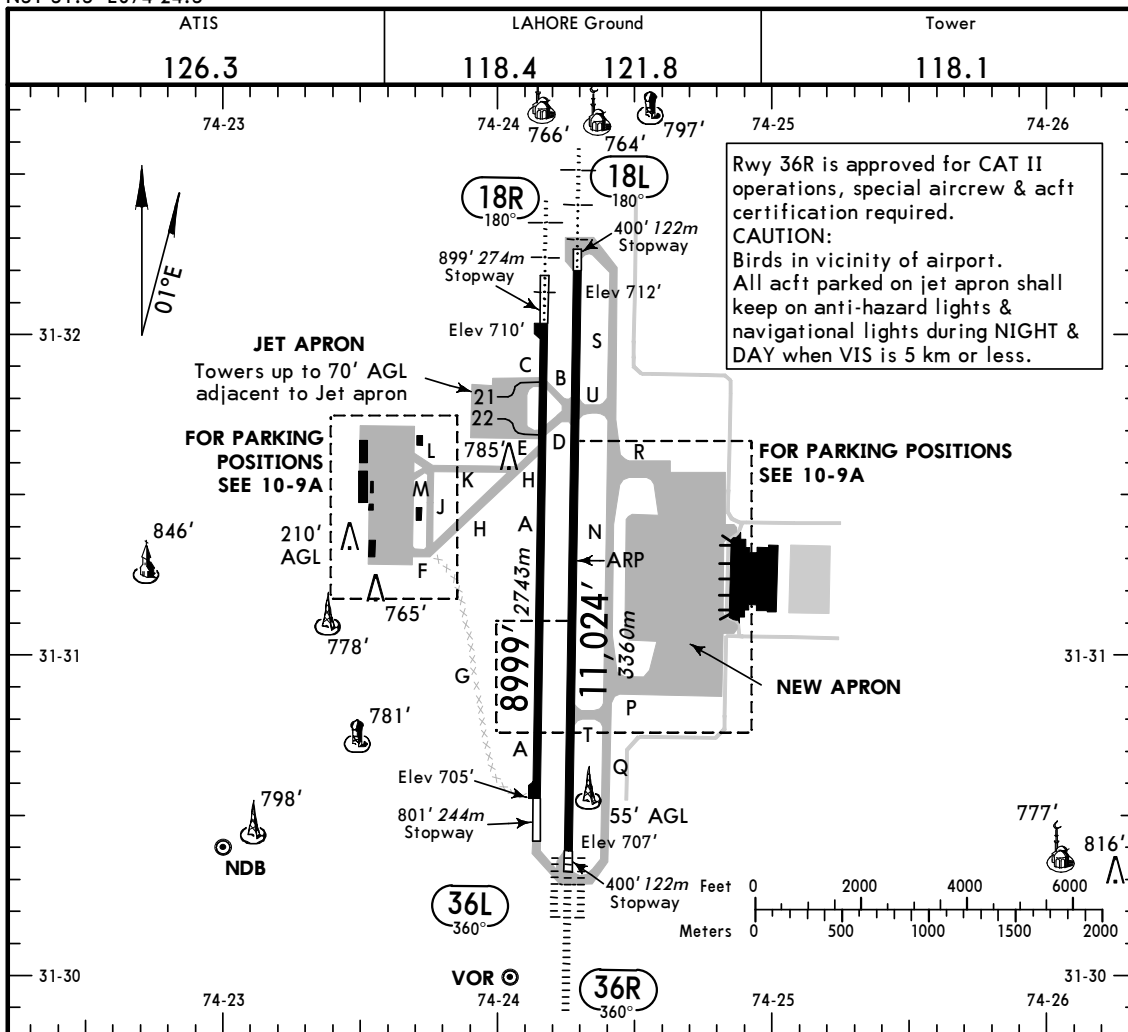
© JEPPESEN SANDERSON, INC., 1991, 2000. ALL RIGHTS RESERVED.

**OPLA/LHE**  
Apt Elev **712'**  
N31 31.3 E074 24.3

**JEPPESSEN**

4 NOV 05 **(10-9)**

**LAHORE, PAKISTAN**  
**ALLAMA IQBAL INTL**



Rwy 36R is approved for CAT II operations, special aircrew & acft certification required.  
**CAUTION:**  
 Birds in vicinity of airport. All acft parked on jet apron shall keep on anti-hazard lights & navigational lights during NIGHT & DAY when VIS is 5 km or less.

**ADDITIONAL RUNWAY INFORMATION**

RWY		USABLE LENGTHS			WIDTH
		Threshold	Landing Beyond Glide Slope	TAKE-OFF	
18L	HIRL (60m) CL (30m) ALS PAPI (3.0°)			11,024' 3360m	151'
36R	HIRL (60m) CL (30m) HIALS-II TDZ PAPI (3.0°) RVR		10,100' 3078m		46m
18R	RL (60m) ALS VASI-R				151'
36L	RL (60m) PAPI-L (3.0°) REIL				46m

**1** Secondary runway.

**JAR-OPS**

**TAKE-OFF 1**

	Rwy 18L/36R	All Rwys		
	LVP must be in Force	LVP must be in Force		
	RL & CL	RCLM (DAY only) or RL	RCLM (DAY only) or RL	NIL (DAY only)
A				
B	200m	250m	400m	500m
C				
D	250m	300m		

**1** Operators applying U.S. Ops Specs: CL required below 300m.

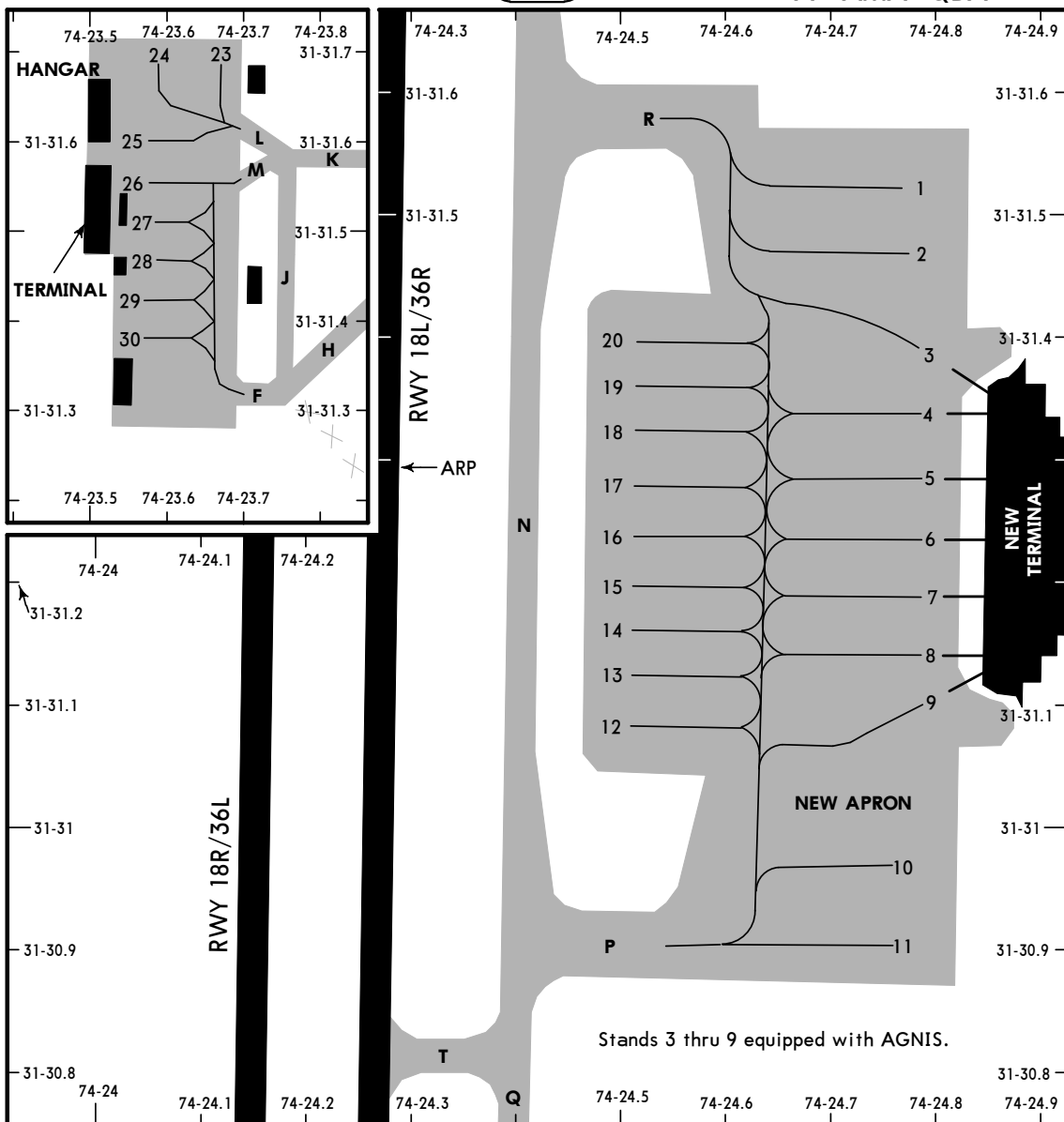
OPLA/LHE

JEPPESEN

LAHORE, PAKISTAN

4 NOV 05 (10-9A)

ALLAMA IQBAL INTL



**INS COORDINATES**

STAND No.	COORDINATES	STAND No.	COORDINATES
1, 2	N31 31.4 E074 24.6	17 thru 20	N31 31.3 E074 24.5
3 thru 5	N31 31.3 E074 24.6	21	N31 31.7 E074 24.1
6 thru 8	N31 31.2 E074 24.6	22	N31 31.6 E074 24.1
9, 10	N31 31.1 E074 24.6	23, 24	N31 31.4 E074 23.5
11	N31 31.0 E074 24.6	25 thru 28	N31 31.3 E074 23.5
12, 13	N31 31.1 E074 24.5	29, 30	N31 31.2 E074 23.5
14 thru 16	N31 31.2 E074 24.5		

**START-UP/PUSH-BACK/TAXI PROCEDURES**

Parking instructions stands:

- 1 thru 20 Push back/pull forward to twy P or R as per instructions of Ground or Tower. Follow guide line for push back, after aligning on central twy lane start engines and disengage tow bar abeam the stand of push back. Acft may start one engine on idle power at the bay and rest on central twy lane.
- 21, 22 Push back/pull forward to twy C or E as per instructions of Ground, then start engines. Acft may start one engine on idle power at the bay and rest on twy C or E.
- 23 thru 25 Push back/pull forward to twy L and start engines. Acft may start one engine on idle power at the bay and rest on twy L.
- 26 Push back/pull forward to twy M and start engines. Acft may start one engine on idle power at the bay and rest on twy M.
- 27 thru 30 Push back/pull forward to twy M or F as per instructions of Ground, then start engines. Acft may start one engine on idle power at the bay and rest on twy M or F.

CHANGES: Start-up procedure.

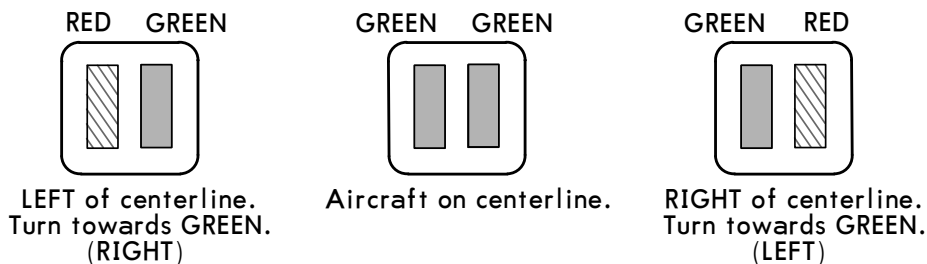
OPLA/LHE

**JEPPESEN**  
18 JUN 04 (10-9B)

**LAHORE, PAKISTAN**  
ALLAMA IQBAL INTL

## VISUAL DOCKING GUIDANCE SYSTEM

### 1. LINEAR PARKING UNIT

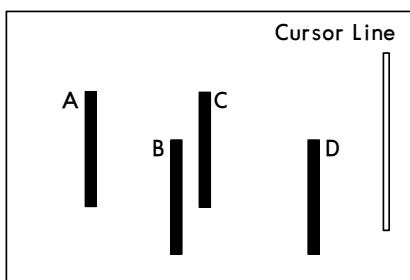


### 2. ANGULAR PARKING UNIT (STOPPING GUIDANCE SYSTEM)

**CAUTION:**

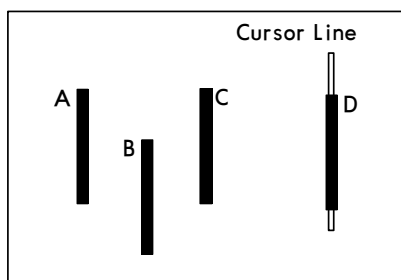
1. Do not over taxi the stopping position.
2. In case AGNIS failure, wait for the marshalling services.
3. When AGNIS is operating, marshalling services will be available on request.
4. Acft not included in groups A, B, C, D should request Tower for marshalling service.

VIEW-1



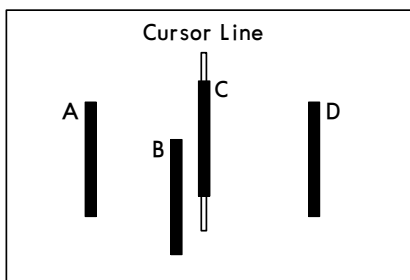
Continue taxi all types.

VIEW-2



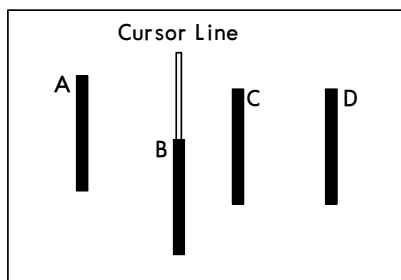
STOP group D.  
Continue taxi all others.

VIEW-3



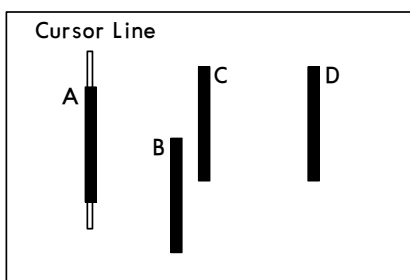
STOP group C.  
Continue taxi A & B.

VIEW-4



STOP group B.  
Continue taxi A.

VIEW-5



STOP group A.

**Groups:**

- A: B777-300, L1011
- B: B747, B777-200, A340, A330-200, IL86
- C: A300, DC-10, B767, B747 SP
- D: B737, A310, A320, B727, BC111, TU-154, B757

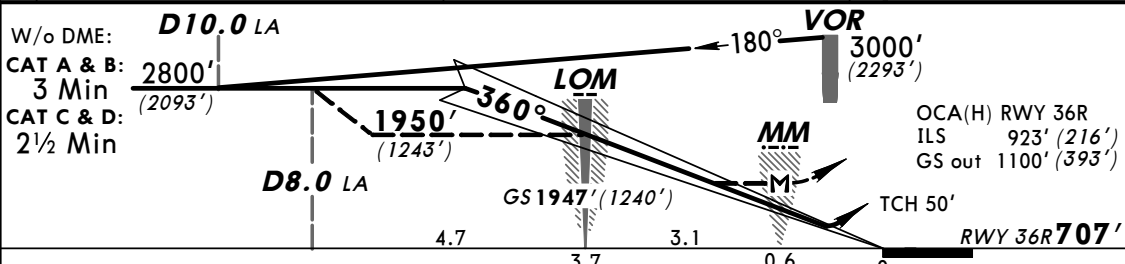
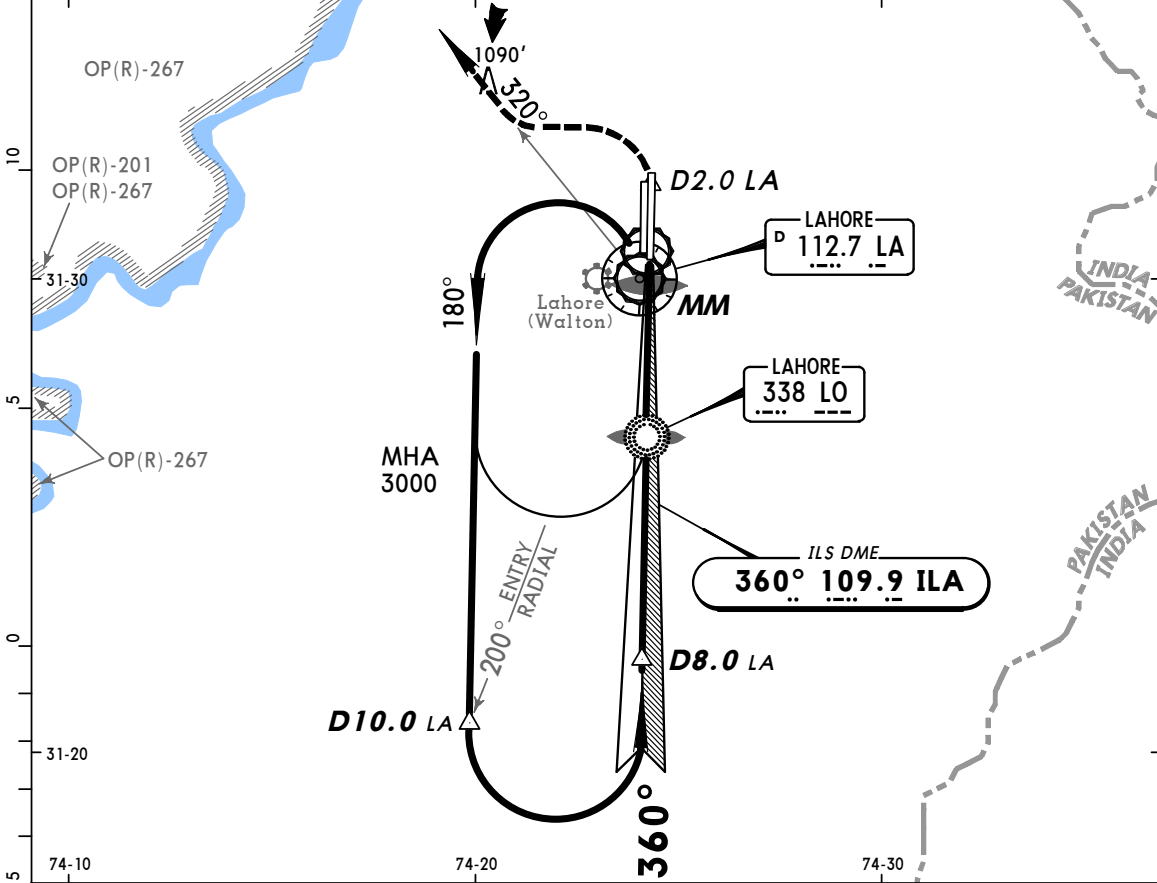
**OPLA**  
LAHORE INTL



11 AUG 00 (11-1)

**LAHORE, PAKISTAN**  
ILS DME ALPHA Rwy 36R

ATIS <b>126.3</b>		LAHORE Approach (R) <b>121.3</b>	LAHORE Tower <b>118.1</b>	Ground <b>121.8</b>	2100' MSA LA VOR
LOC ILA <b>109.9</b>	Final Apch Crs <b>360°</b>	GS LOM <b>1947' (1240')</b>	ILS DA(H) <b>923' (216')</b>	Apt Elev <b>712'</b> RWY <b>707'</b>	
<b>MISSED APCH: Climb STRAIGHT AHEAD to D2.0 LA, then turn LEFT to intercept R-320 outbound LA VOR climbing to 2800' and contact ATC.</b>					
Alt Set: hPa (IN on req)		Rwy Elev: 26 hPa	Trans level: FL 50	Trans alt: 3000' (2293')	



Gnd speed-Kts	70	90	100	120	140	160	HIALS PAPI PAPI D2.0 LA 2800' LA 112.7 R-320	
GS	3.00°	377	485	539	647	755		862
MAP at MM								

PANS OPS	STRAIGHT-IN LANDING RWY 36R				CIRCLE-TO-LAND		
	ILS		LOC (GS out)		Max Kts	MDA(H)	VIS
	FULL	ALS out	MM out	ALS out			
A	RVR 600m	RVR 1000m	RVR 900m	NOT AUTH	100	1300' (588')	1500m
B			RVR 1500m		135	1300' (588')	1600m
C			RVR 1800m		180	1400' (688')	2400m
D			RVR 2000m		205	1500' (788')	3600m

CHANGES: Airport name. Minimums.

© JEPPESEN SANDERSON, INC., 1999, 2001. ALL RIGHTS RESERVED.



**OPLA**  
LAHORE INTL

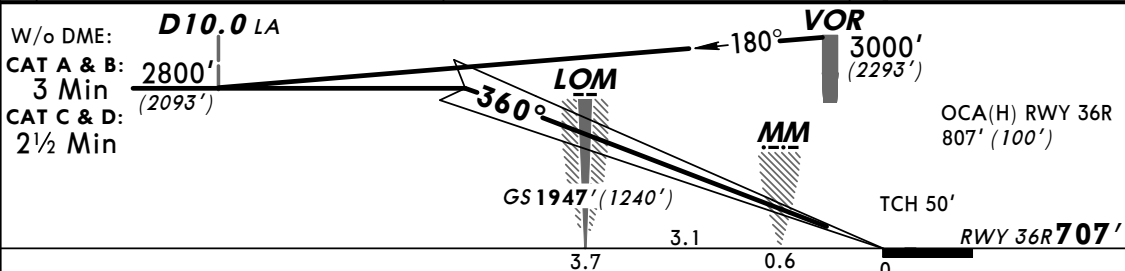
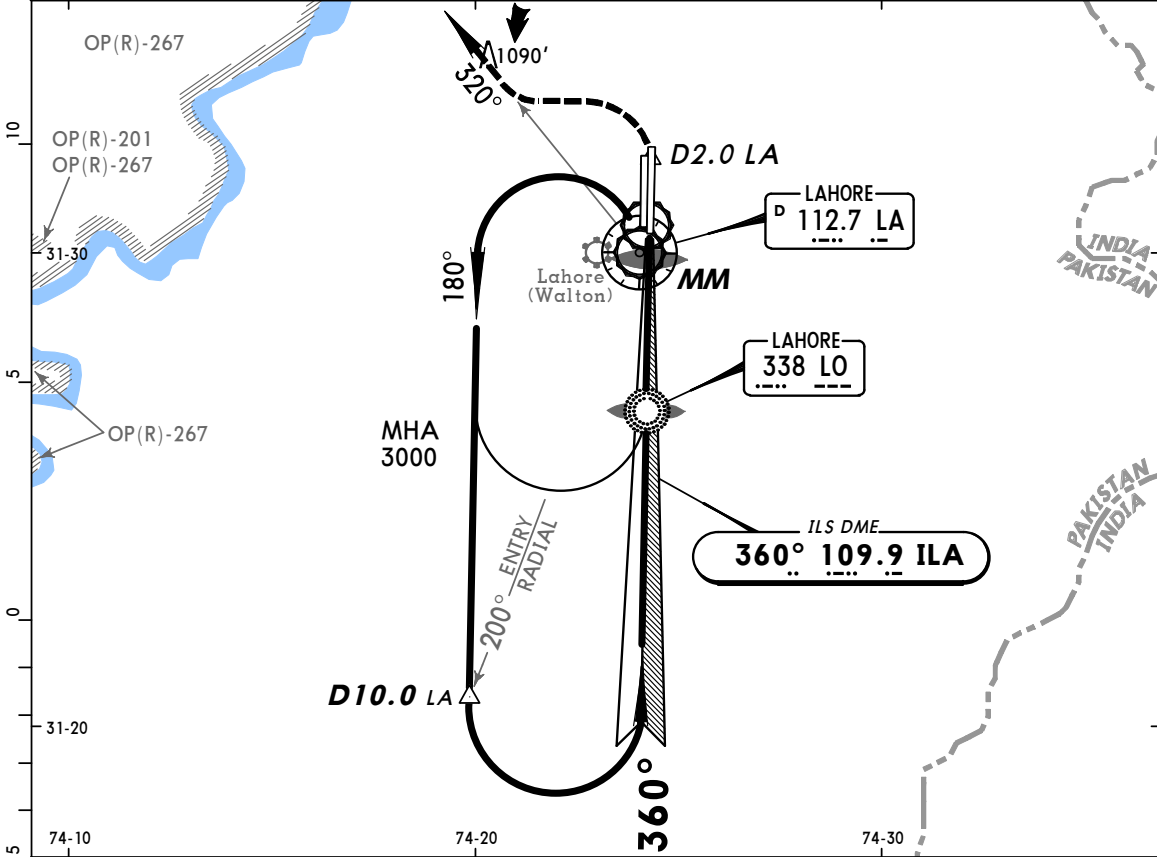
**JEPPESEN**

**LAHORE, PAKISTAN**

11 AUG 00 **(11-1A)**

**CAT II ILS DME ALPHA Rwy 36R**

ATIS <b>126.3</b>		LAHORE Approach (R) <b>121.3</b>	LAHORE Tower <b>118.1</b>	Ground <b>121.8</b>	2100'  MSA LA VOR
LOC ILA <b>109.9</b>	Final Apch Crs <b>360°</b>	GS LOM <b>1947' (1240')</b>	CAT II ILS RA <b>104'</b> DA(H) 807' (100')	Apt Elev 712' RWY <b>707'</b>	
<b>MISSED APCH: Climb STRAIGHT AHEAD to D2.0 LA, then turn LEFT to intercept R-320 outbound LA VOR climbing to 2800' and contact ATC.</b>					
Alt Set: hPa (IN on req)		Rwy Elev: 26 hPa	Trans level: FL 50	Trans alt: 3000' (2293')	
Special Aircrew & Aircraft Certification Required.					



Gnd speed-Kts	70	90	100	120	140	160	HIALS PAPI PAPI D2.0 LA 2800' LA 112.7 R-320
GS	3.00°	377	485	539	647	755	

**JAR-OPS** STRAIGHT-IN LANDING RWY 36R  
**CAT II ILS**  
 ABCD  
**RA 104'**  
 DA(H) **807' (100')**

**PANS OPS**  
 RVR **350m**

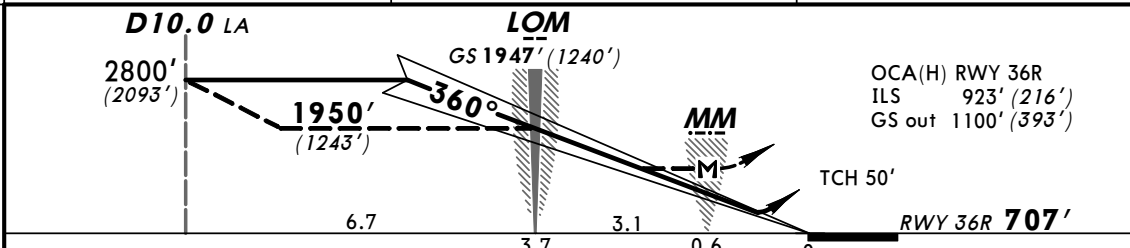
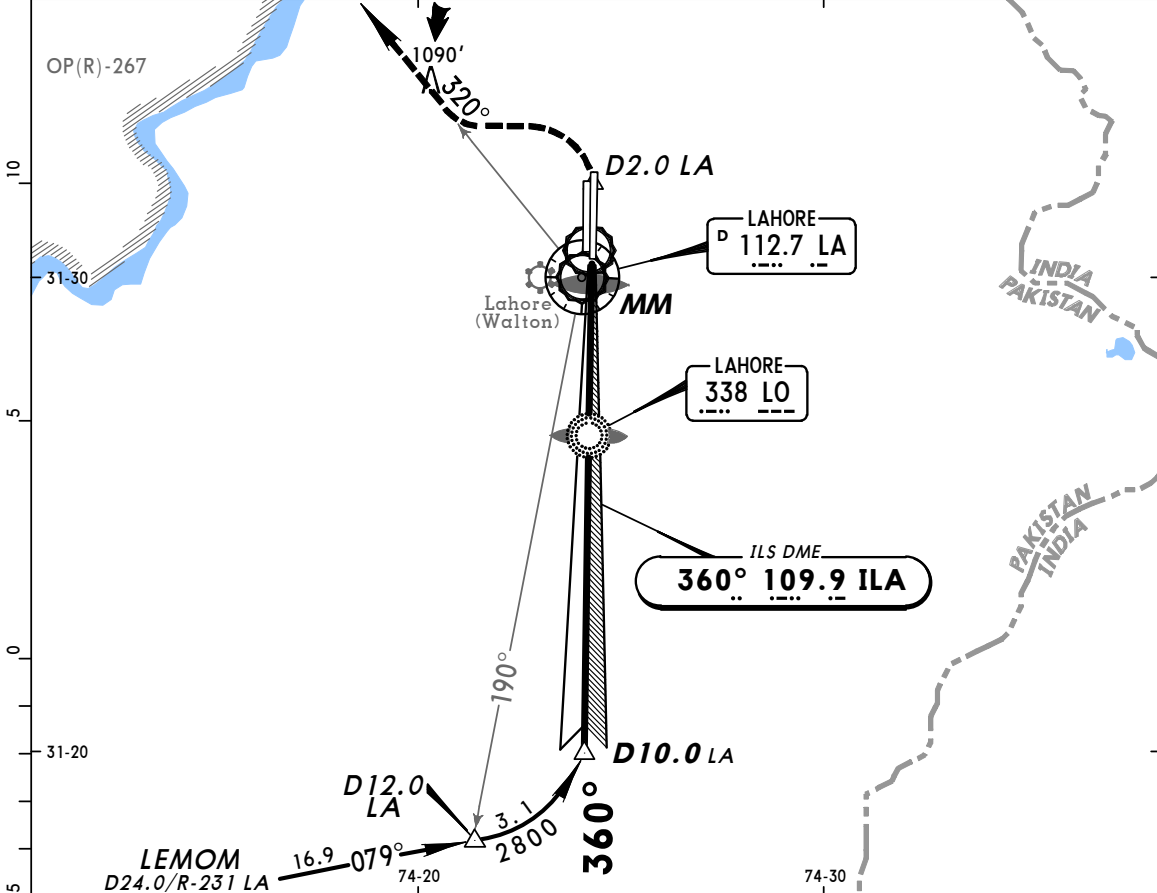
**OPLA**  
LAHORE INTL



11 AUG 00 (11-2)

**LAHORE, PAKISTAN**  
ILS DME BRAVO Rwy 36R

ATIS <b>126.3</b>		LAHORE Approach (R) <b>121.3</b>	LAHORE Tower <b>118.1</b>	Ground <b>121.8</b>	<p>2100' MSA LA VOR</p>
LOC ILA <b>109.9</b>	Final Apch Crs <b>360°</b>	GS LOM <b>1947' (1240')</b>	ILS DA(H) <b>923' (216')</b>	Apt Elev <b>712'</b> RWY <b>707'</b>	
<p><b>MISSED APCH:</b> Climb STRAIGHT AHEAD to D2.0 LA, then turn LEFT to intercept R-320 outbound LA VOR climbing to 2800' and contact ATC.</p>					
Alt Set: hPa (IN on req)		Rwy Elev: 26 hPa	Trans level: FL 50	Trans alt: 3000' (2293')	



Gnd speed-Kts	70	90	100	120	140	160		<b>D2.0</b> LA ↑ <b>2800'</b> LT <b>LA 112.7</b> <b>R-320</b>	
GS	3.00°	377	485	539	647	755			862
MAP at MM									

PANS OPS	JAR-OPS STRAIGHT-IN LANDING RWY 36R				CIRCLE-TO-LAND		
	ILS		LOC (GS out)		Max Kts	MDA(H)	VIS
	FULL	ALS out	MM out	ALS out			
A			RVR 900m	NOT AUTH	100	1300' (588')	1500m
B			RVR 1000m		135	1300' (588')	1600m
C	RVR 600m	RVR 1000m	RVR 1000m		180	1400' (688')	2400m
D			RVR 1400m		205	1500' (788')	3600m

CHANGES: Airport name. Minimums.

**OPLA**  
LAHORE INTL

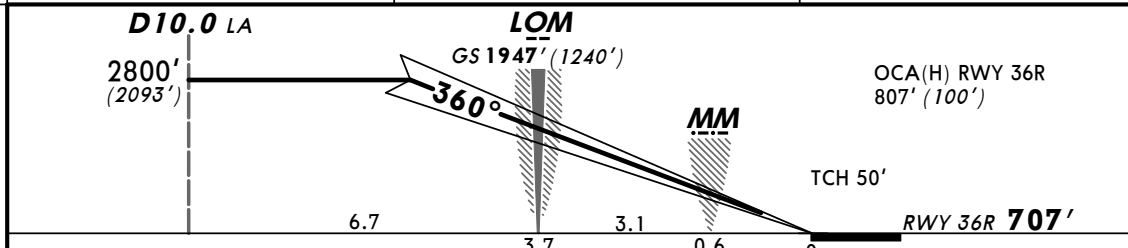
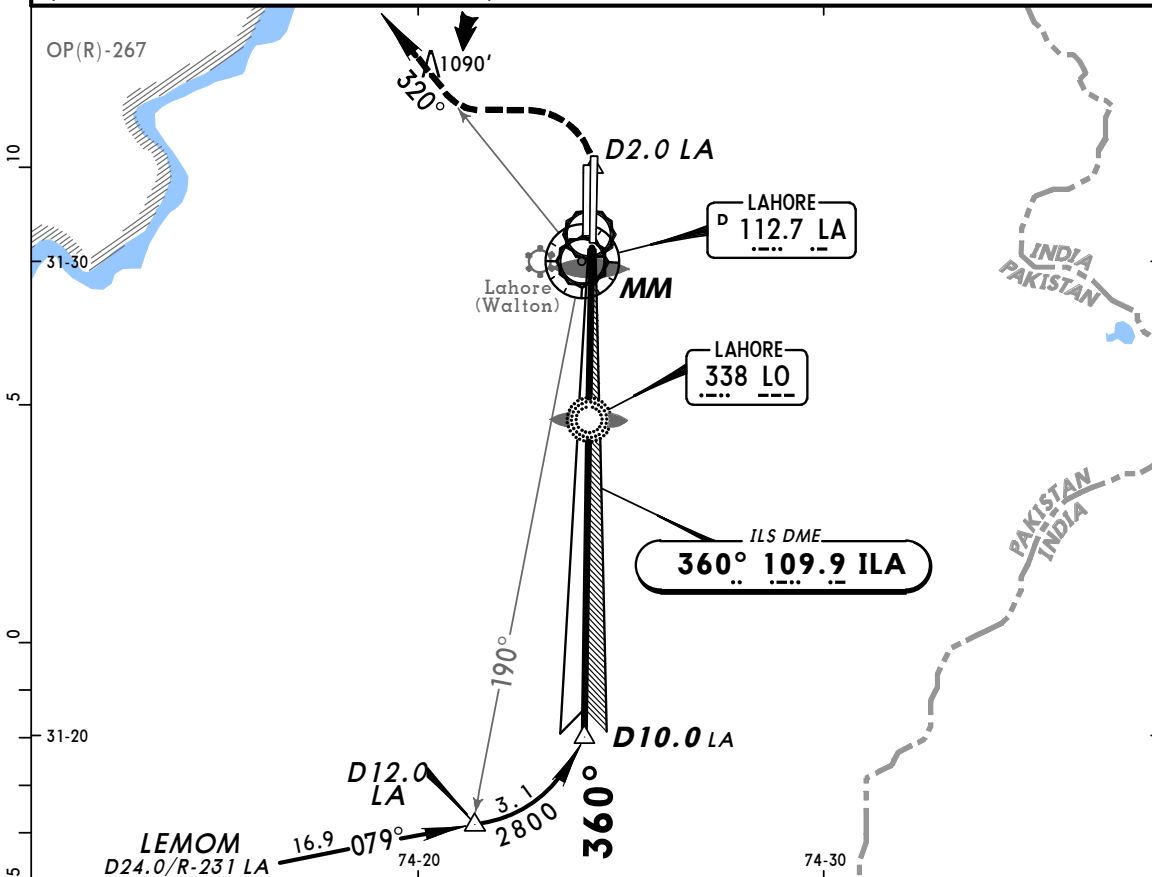


11 AUG 00

(11-2A)

**LAHORE, PAKISTAN**  
**CAT II ILS DME BRAVO Rwy 36R**

BRIEFING STRIP™	ATIS <b>126.3</b>	LAHORE Approach (R) <b>121.3</b>	LAHORE Tower <b>118.1</b>	Ground <b>121.8</b>	<p>2100' MSA LA VOR</p>	
	LOC ILA <b>109.9</b>	Final Apch Crs <b>360°</b>	GS LOM <b>1947' (1240')</b>	CAT II ILS <b>RA 104'</b> DA(H) 807' (100')		Apt Elev 712' RWY <b>707'</b>
	<p><b>MISSED APCH:</b> Climb STRAIGHT AHEAD to D2.0 LA, then turn LEFT to intercept R-320 outbound LA VOR climbing to 2800' and contact ATC.</p>					
Alt Set: hPa (IN on req)		Rwy Elev: 26 hPa	Trans level: FL 50	Trans alt: 3000' (2293')		
Special Aircrew & Aircraft Certification Required.						



Gnd speed-Kts	70	90	100	120	140	160		<b>D2.0</b> LA ↑	<b>2800'</b> ← LT	<b>LA</b> <b>112.7</b> <b>R-320</b>
GS	3.00°	377	485	539	647	755				

**JAR-OPS** STRAIGHT-IN LANDING RWY 36R  
**CAT II ILS**  
 ABCD  
**RA 104'**  
 DA(H) **807' (100')**

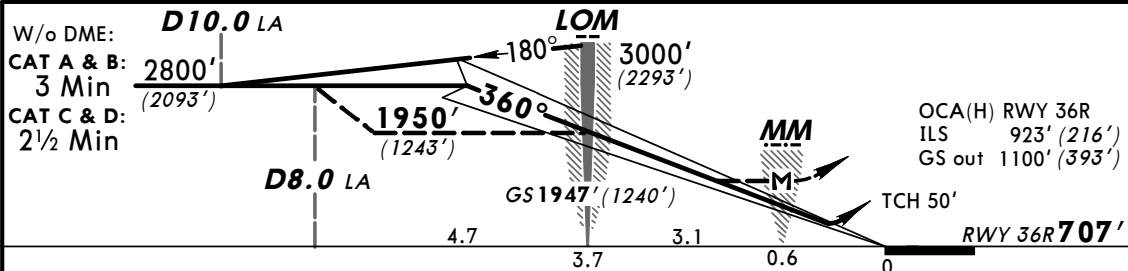
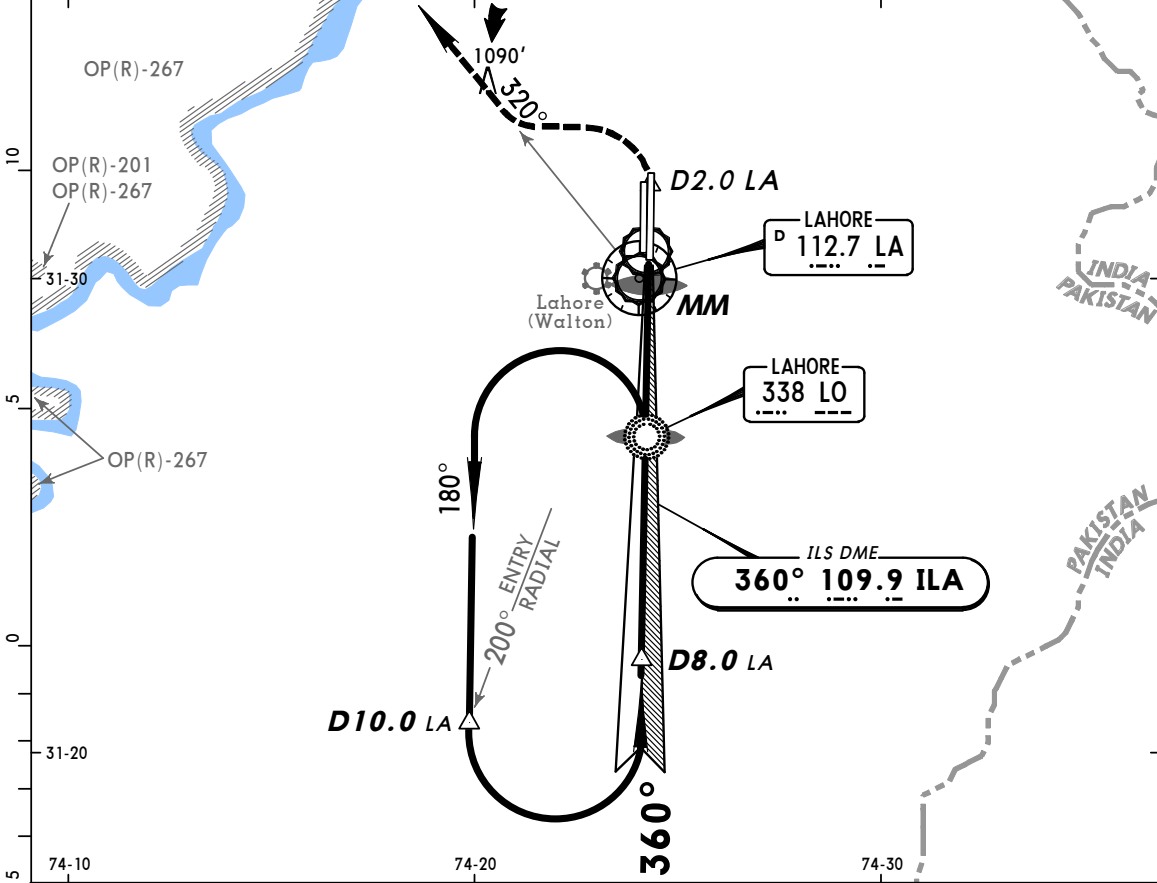
**PANS OPS**  
 RVR **350m**

**OPLA**  
LAHORE INTL

**JEPPESEN**  
11 AUG 00 (11-3)

**LAHORE, PAKISTAN**  
ILS DME CHARLIE Rwy 36R

ATIS <b>126.3</b>		LAHORE Approach (R) <b>121.3</b>		LAHORE Tower <b>118.1</b>		Ground <b>121.8</b>	
LOC ILA <b>109.9</b>	Final Apch Crs <b>360°</b>	GS LOM <b>1947' (1240')</b>	ILS DA(H) <b>923' (216')</b>	Apt Elev <b>712'</b> RWY <b>707'</b>		2100' MSA LA VOR	
<b>MISSED APCH:</b> Climb STRAIGHT AHEAD to D2.0 LA, then turn LEFT to intercept R-320 outbound LA VOR climbing to 2800' and contact ATC.							
Alt Set: hPa (IN on req)		Rwy Elev: 26 hPa		Trans level: FL 50		Trans alt: 3000' (2293')	



Gnd speed-Kts	70	90	100	120	140	160	HIALS PAPI PAPI	D2.0 LA 2800' LA ← LT	LA 112.7 R-320	
GS	3.00°	377	485	539	647	755				862
MAP at MM										

PANS OPS	JAR-OPS STRAIGHT-IN LANDING RWY 36R				CIRCLE-TO-LAND		
	ILS		LOC (GS out)				
	DA(H) 923' (216')		MDA(H) 1100' (393')				
	FULL	ALS out	MM out	ALS out	Max Kts	MDA(H)	VIS
A			RVR 900m		100	1300' (588')	1500m
B					135	1300' (588')	1600m
C	RVR 600m	RVR 1000m	RVR 1000m	NOT AUTH	180	1400' (688')	2400m
D			RVR 1400m		205	1500' (788')	3600m

CHANGES: Airport name. Minimums.

**OPLA**  
LAHORE INTL

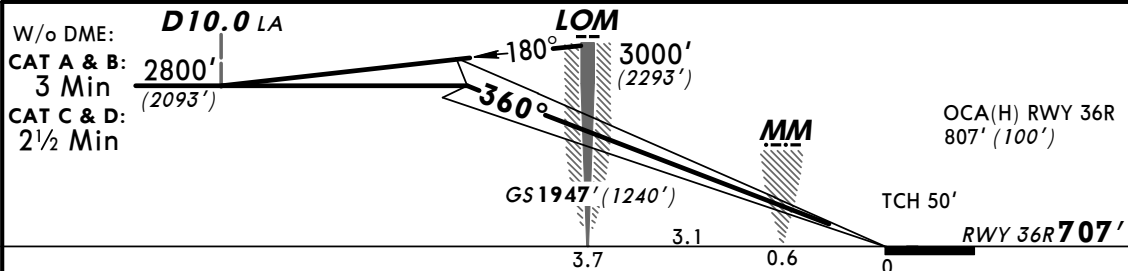
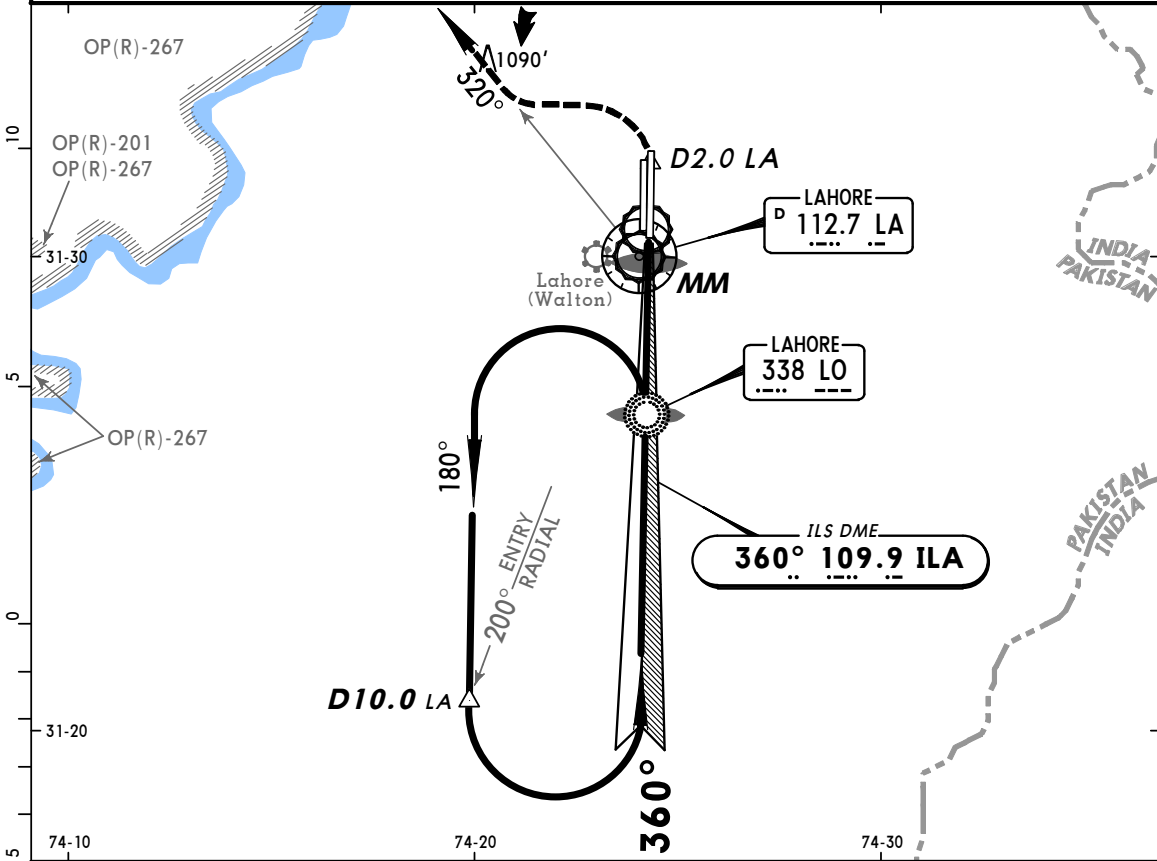
**JEPPESEN**

**LAHORE, PAKISTAN**

11 AUG 00 **(11-3A)**

**CAT II ILS DME CHARLIE Rwy 36R**

ATIS <b>126.3</b>		LAHORE Approach (R) <b>121.3</b>		LAHORE Tower <b>118.1</b>		Ground <b>121.8</b>	
LOC ILA <b>109.9</b>	Final Apch Crs <b>360°</b>	GS LOM <b>1947' (1240')</b>	CAT II ILS <b>RA 104'</b> DA(H) 807' (100')		Apt Elev <b>712'</b> RWY <b>707'</b>		
<b>MISSED APCH:</b> Climb STRAIGHT AHEAD to D2.0 LA, then turn LEFT to intercept R-320 outbound LA VOR climbing to 2800' and contact ATC.							2100'  MSA LA VOR
Alt Set: hPa (IN on req)		Rwy Elev: 26 hPa		Trans level: FL 50		Trans alt: 3000' (2293')	
Special Aircrew & Aircraft Certification Required.							



W/o DME:	<b>D10.0 LA</b>						<b>LOM</b>		3000' (2293')		OCA(H) RWY 36R 807' (100')	
CAT A & B:	2800' (2093')						3 Min		360°		TCH 50'	
CAT C & D:	2 1/2 Min						3.7		3.1		0.6	
GS	70	90	100	120	140	160	3.7		0.6		0	
GS	3.00°	377	485	539	647	755	3.7		0.6		0	

**JAR-OPS** STRAIGHT-IN LANDING RWY 36R  
CAT II ILS  
ABCD  
**RA 104'**  
DA(H) **807' (100')**

**PANS OPS** RVR **350m**

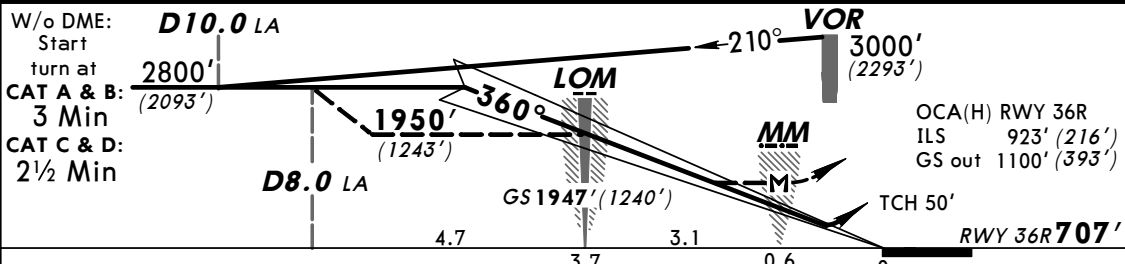
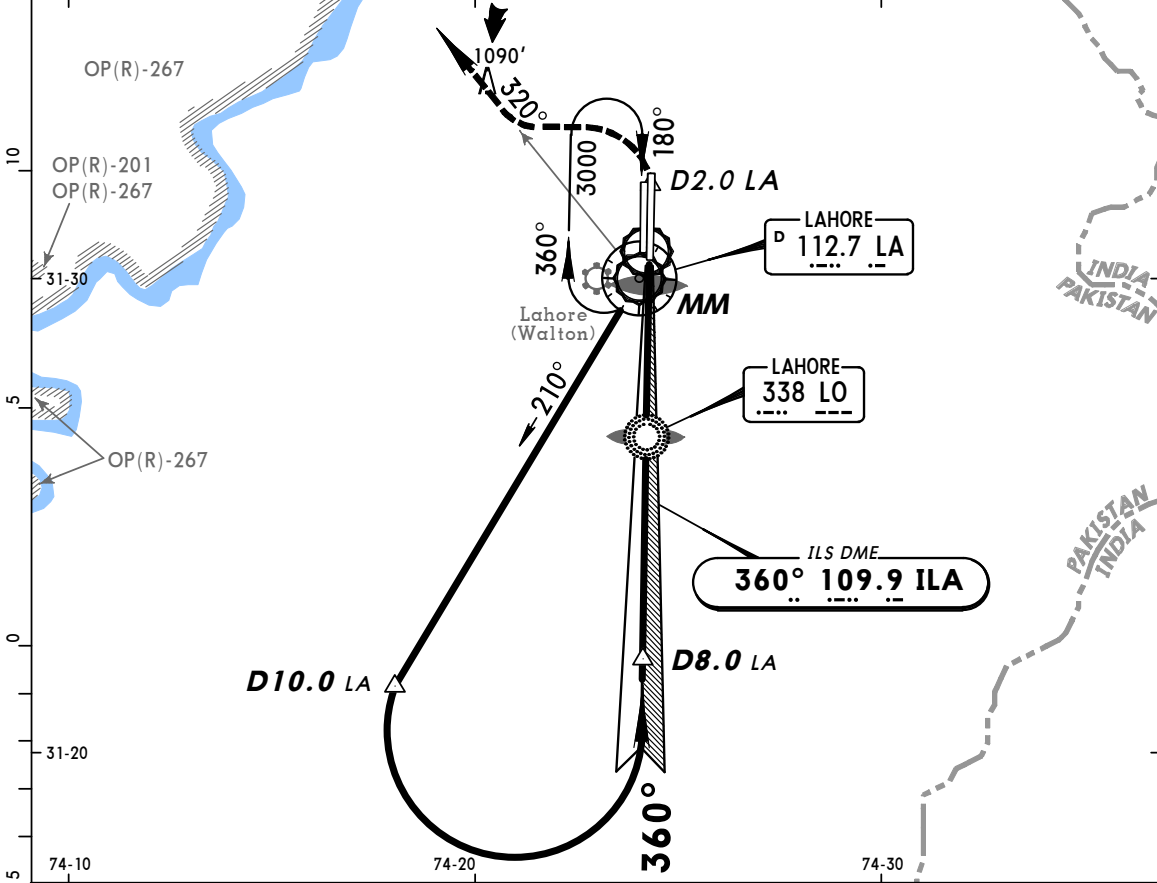
**OPLA**  
LAHORE INTL



11 AUG 00 (11-4)

**LAHORE, PAKISTAN**  
ILS DME DELTA Rwy 36R

ATIS <b>126.3</b>		LAHORE Approach (R) <b>121.3</b>		LAHORE Tower <b>118.1</b>		Ground <b>121.8</b>	
LOC ILA <b>109.9</b>	Final Apch Crs <b>360°</b>	GS LOM <b>1947' (1240')</b>	ILS DA(H) <b>923' (216')</b>	Apt Elev <b>712'</b> RWY <b>707'</b>			
<b>MISSED APCH:</b> Climb STRAIGHT AHEAD to D2.0 LA, then turn LEFT to intercept R-320 outbound LA VOR climbing to 2800' and contact ATC.							2100' MSA LA VOR
Alt Set: hPa (IN on req)		Rwy Elev: 26 hPa		Trans level: FL 50		Trans alt: 3000' (2293')	



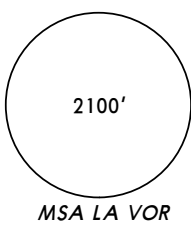
Gnd speed-Kts	70	90	100	120	140	160	HIALS PAPI PAPI	D2.0 LA	2800' LT	LA 112.7 R-320	
GS	3.00°	377	485	539	647	755					862
MAP at MM											

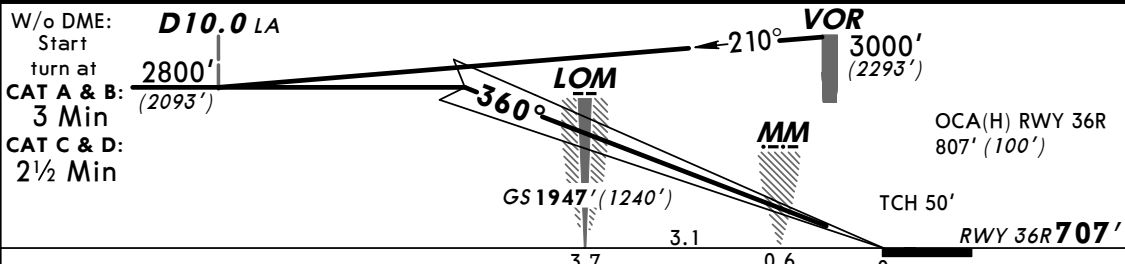
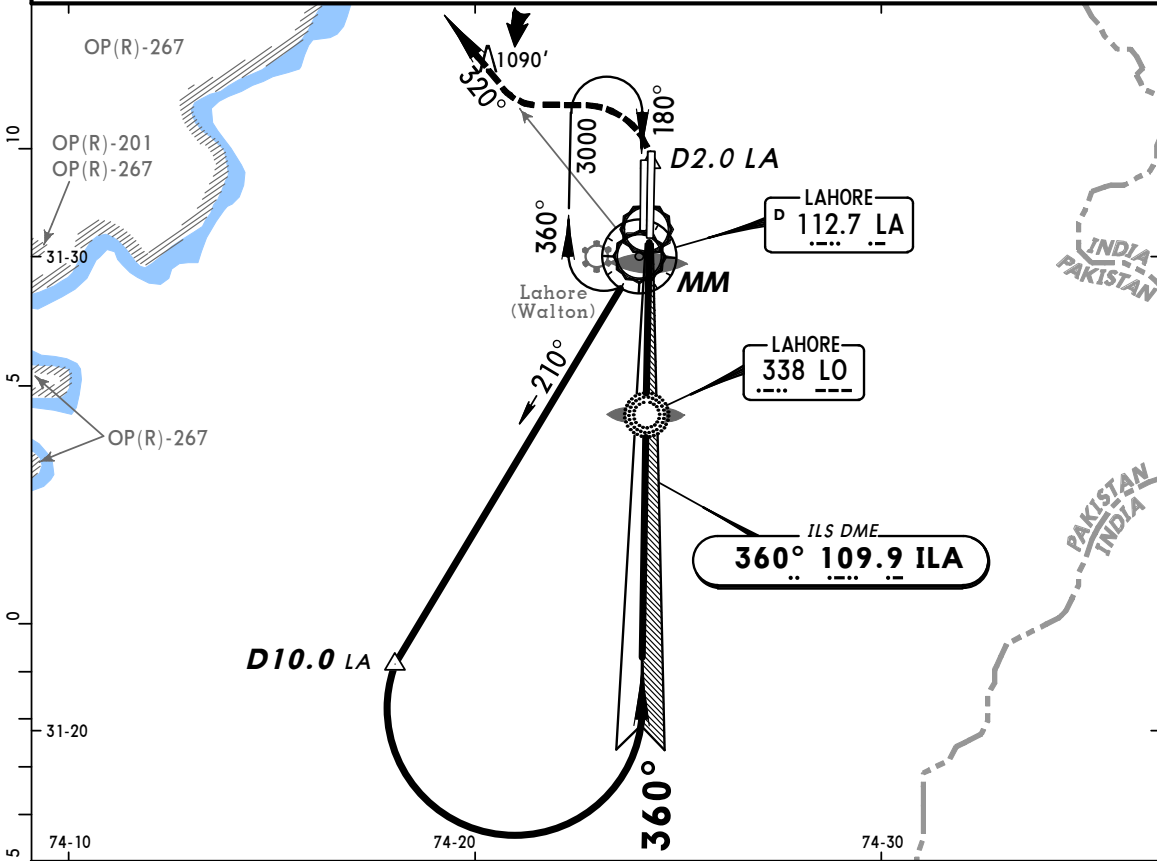
PANS OPS	STRAIGHT-IN LANDING RWY 36R				CIRCLE-TO-LAND		
	ILS		LOC (GS out)		Max Kts	MDA(H)	VIS
	FULL	ALS out	MM out	ALS out			
A			RVR 900m	NOT AUTH	100	1300' (588')	1500m
B			RVR 1000m	NOT AUTH	135	1300' (588')	1600m
C	RVR 600m	RVR 1000m	RVR 1000m	NOT AUTH	180	1400' (688')	2400m
D			RVR 1400m	NOT AUTH	205	1500' (788')	3600m

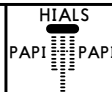
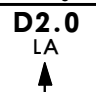
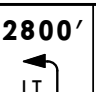
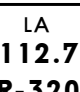
**OPLA**  
LAHORE INTL

**JEPPESEN**  
11 AUG 00 **11-4A**

**LAHORE, PAKISTAN**  
**CAT II ILS DME DELTA Rwy 36R**

ATIS <b>126.3</b>		LAHORE Approach (R) <b>121.3</b>	LAHORE Tower <b>118.1</b>	Ground <b>121.8</b>	 <p>2100' MSA LA VOR</p>
LOC ILA <b>109.9</b>	Final Apch Crs <b>360°</b>	GS LOM <b>1947' (1240')</b>	CAT II ILS RA <b>104'</b> DA(H) 807'(100')	Apt Elev <b>712'</b> RWY <b>707'</b>	
<p><b>MISSED APCH:</b> Climb STRAIGHT AHEAD to D2.0 LA, then turn LEFT to intercept R-320 outbound LA VOR climbing to 2800' and contact ATC.</p>					
Alt Set: hPa (IN on req)		Rwy Elev: 26 hPa	Trans level: FL 50	Trans alt: 3000' (2293')	
Special Aircrew & Aircraft Certification Required.					



Gnd speed-Kts	70	90	100	120	140	160				
GS	3.00°	377	485	539	647	755				

**JAR-OPS** STRAIGHT-IN LANDING RWY 36R  
**CAT II ILS**  
 ABCD  
**RA 104'**  
 DA(H) **807' (100')**

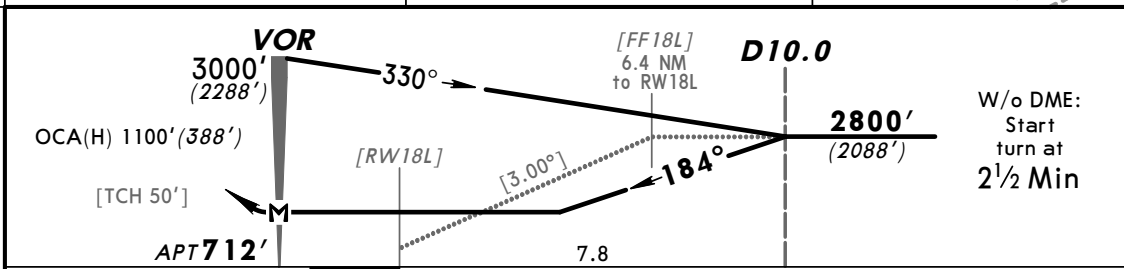
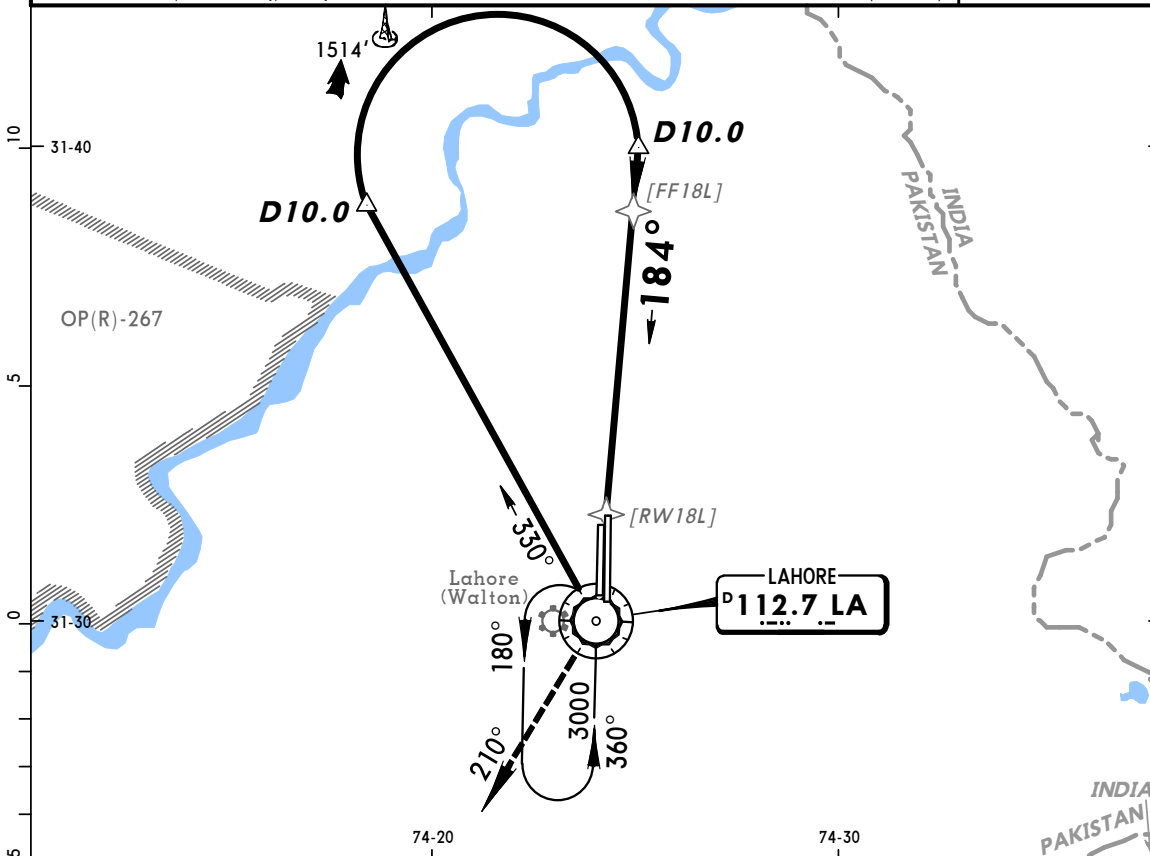
**PANS OPS** RVR **350m**

**OPLA**  
LAHORE INTL

**JEPPESEN**  
11 AUG 00 (13-1)

**LAHORE, PAKISTAN**  
VOR DME or VOR ALPHA Rwy 18L

ATIS <b>126.3</b>		LAHORE Approach <b>121.3</b>		LAHORE Tower <b>118.1</b>	Ground <b>121.8</b>
VOR LA <b>112.7</b>	Final Apch Crs <b>184°</b>	Minimum Alt <b>D10.0</b> <b>2800'</b> (2088')	MDA(H) <b>1100'</b> (388')	Apt Elev <b>712'</b>	
MISSED APCH: Turn RIGHT climb on R-210 to 2800' and contact ATC.					2100'
Alt Set: hPa (IN on req) Apt Elev: 26 hPa Trans level: FL 50 Trans alt: 3000'(2288')					



Gnd speed-Kts	70	90	100	120	140	160
Descent angle [3.00°]	372	478	531	637	743	849
MAP at VOR						

ALS	2800'	LA
PAPI	on	112.7
PAPI	RT	R-210

PANS OPS	JAR-OPS STRAIGHT-IN LANDING RWY 18L		CIRCLE-TO-LAND	
	MDA(H) <b>1100'</b> (388')			
	ALS out		Max Kts	
	A	RVR 1300m	100	MDA(H) <b>1300'</b> (588') VIS 1500m
	B	RVR 1400m	135	MDA(H) <b>1300'</b> (588') VIS 1600m
C	RVR 1600m	180	MDA(H) <b>1400'</b> (688') VIS 2400m	
D	RVR 1800m	205	MDA(H) <b>1500'</b> (788') VIS 3600m	

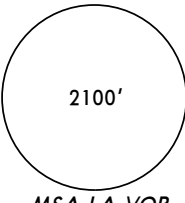


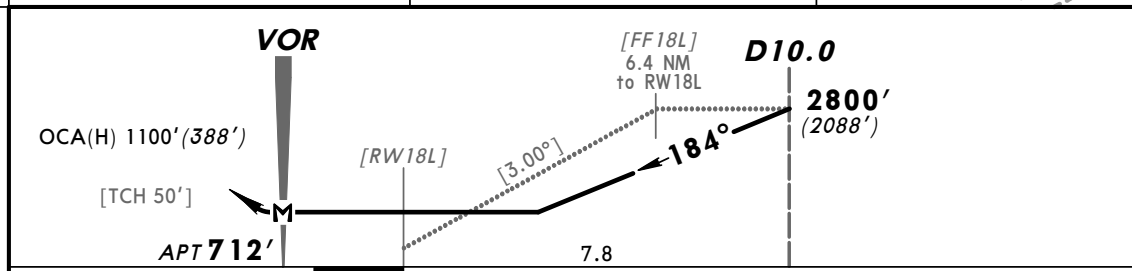
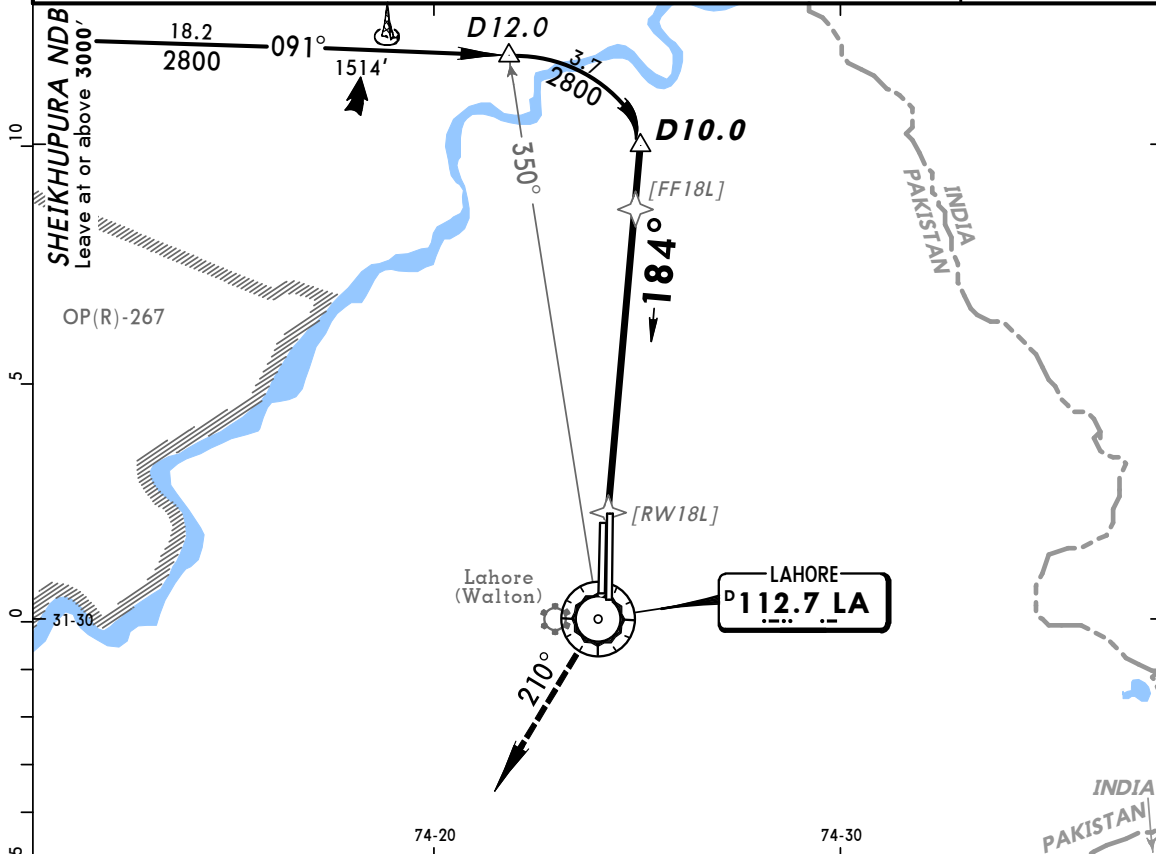
**OPLA**  
LAHORE INTL

**JEPPESEN**

**LAHORE, PAKISTAN**  
VOR DME BRAVO Rwy 18L

11 AUG 00 (13-2)

ATIS <b>126.3</b>		LAHORE Approach <b>121.3</b>		LAHORE Tower <b>118.1</b>		Ground <b>121.8</b>	
VOR LA <b>112.7</b>	Final Apch Crs <b>184°</b>	Minimum Alt <b>D10.0</b> <b>2800'</b> (2088')	MDA(H) <b>1100'</b> (388')	Apt Elev <b>712'</b>			
<b>MISSED APCH: Turn RIGHT climb on R-210 to 2800' and contact ATC.</b>							
Alt Set: hPa (IN on req) Apt Elev: 26 hPa Trans level: FL 50 Trans alt: 3000'(2288')						MSA LA VOR	



Gnd speed-Kts	70	90	100	120	140	160	<input checked="" type="checkbox"/> ALS PAPI PAPI <input type="checkbox"/> RT	2800' on 112.7 R-210
Descent angle [3.00°]	372	478	531	637	743	849		
MAP at VOR								

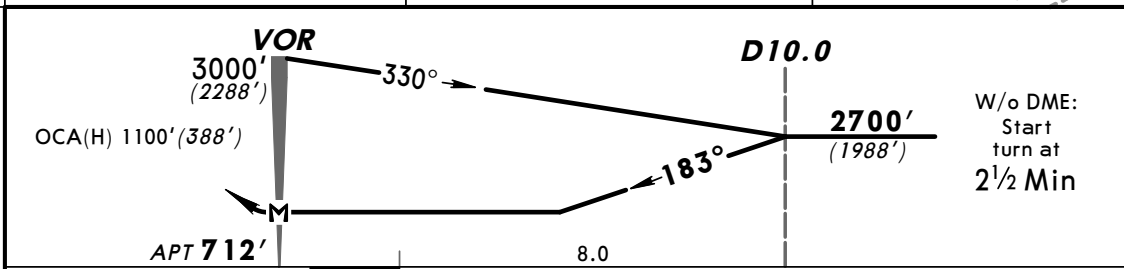
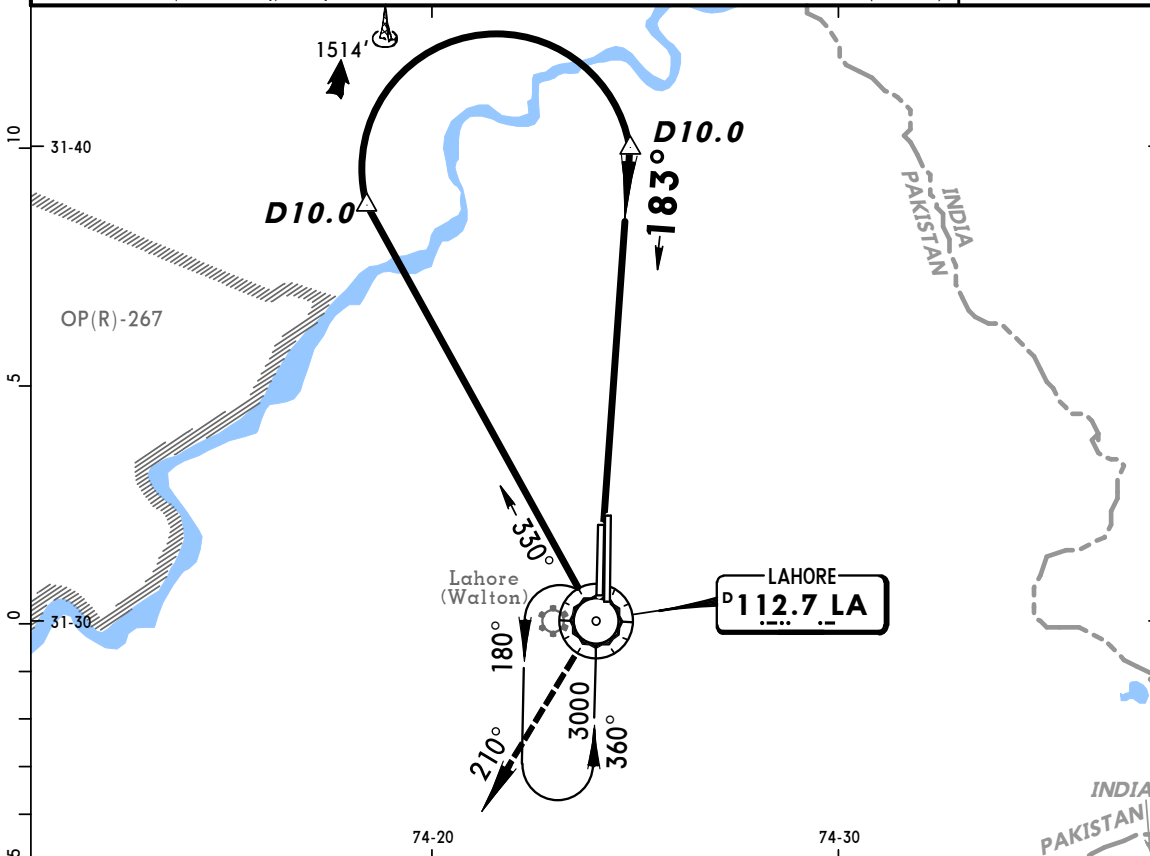
PANS OPS	STRAIGHT-IN LANDING RWY 18L			CIRCLE-TO-LAND		
	MDA(H) <b>1100'</b> (388')					
			ALS out	Max Kts	MDA(H)	VIS
	A	RVR 1300m	RVR 1500m	100	1300' (588')	1500m
	B	RVR 1400m	RVR 1500m	135	1300' (588')	1600m
C	RVR 1600m	RVR 1800m	180	1400' (688')	2400m	
D	RVR 1800m	RVR 2000m	205	1500' (788')	3600m	

**OPLA**  
LAHORE INTL

**JEPPESEN**  
11 AUG 00 (13-3)

**LAHORE, PAKISTAN**  
VOR DME or VOR ALPHA Rwy 18R

ATIS <b>126.3</b>		LAHORE Approach <b>121.3</b>		LAHORE Tower <b>118.1</b>	Ground <b>121.8</b>
VOR LA <b>112.7</b>	Final Apch Crs <b>183°</b>	Minimum Alt <b>D10.0</b> <b>2700'</b> (1988')	MDA(H) <b>1100'</b> (388')	Apt Elev <b>712'</b>	
MISSED APCH: Turn RIGHT climb on R-210 to 2700' and contact ATC.					2100'
Alt Set: hPa (IN on req) Apt Elev: 26 hPa Trans level: FL 50 Trans alt: 3000'(2288')					



				ALS	2700'	LA
				VASI	on	112.7
				RT		R-210

PANS OPS	STRAIGHT-IN LANDING RWY 18R			CIRCLE-TO-LAND		
	MDA(H) <b>1100'</b> (388')			Max Kts.	MDA(H)	VIS
	A	RVR 1300m	ALS out	100	1300' (588')	1500m
	B	RVR 1400m	RVR 1500m	135	1300' (588')	1600m
	C	RVR 1600m	RVR 1800m	180	1400' (688')	2400m
D	RVR 1800m	RVR 2000m	205	1500' (788')	3600m	

**OPLA**  
LAHORE INTL

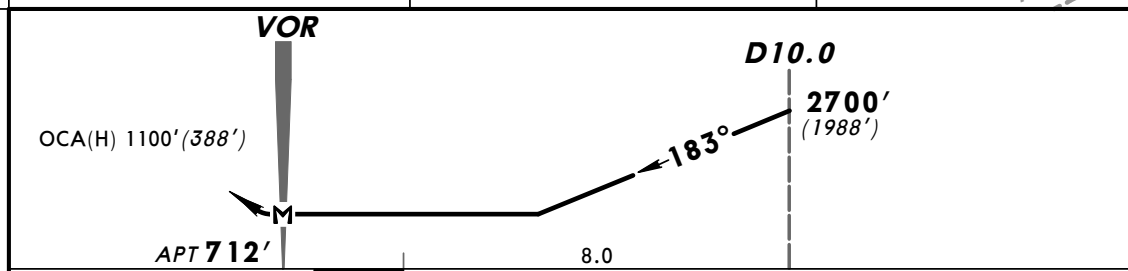
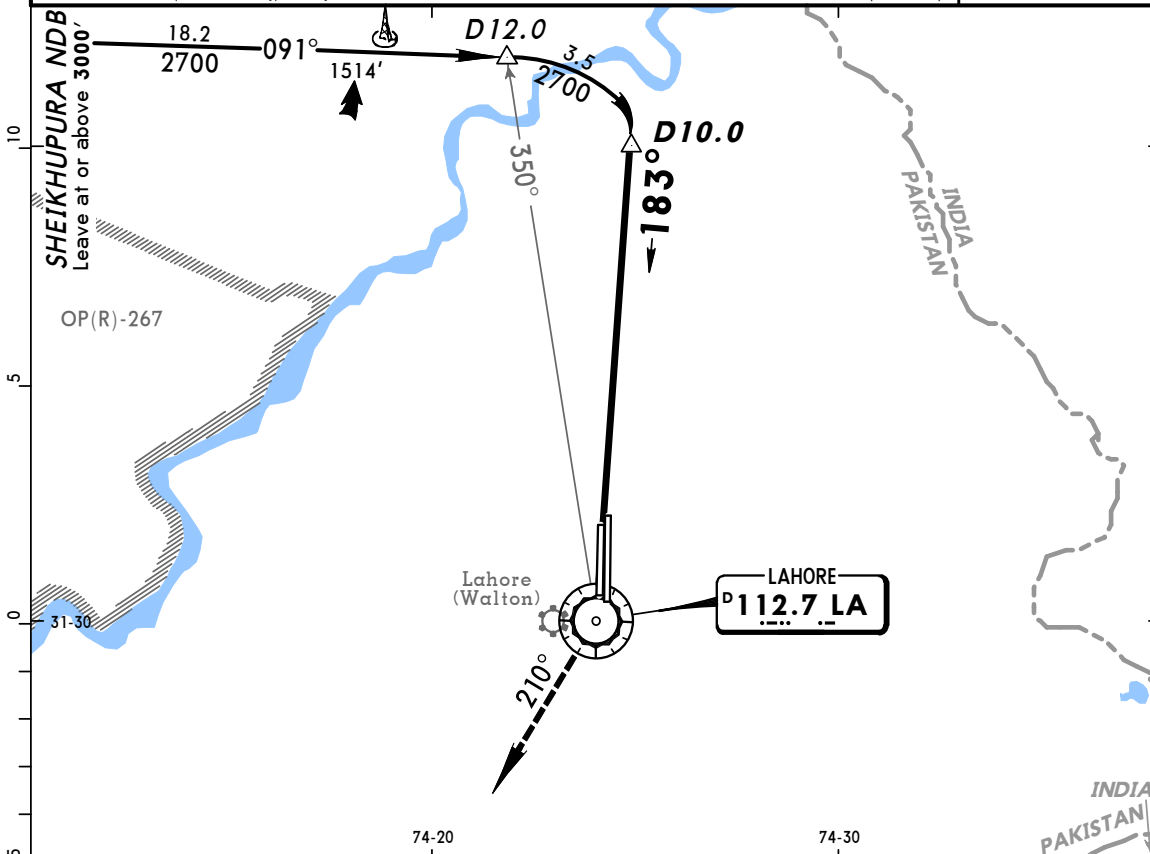
**JEPPESEN**

**LAHORE, PAKISTAN**

11 AUG 00 (13-4)

**VOR DME BRAVO Rwy 18R**

ATIS <b>126.3</b>		LAHORE Approach <b>121.3</b>		LAHORE Tower <b>118.1</b>	Ground <b>121.8</b>
VOR LA <b>112.7</b>	Final Apch Crs <b>183°</b>	Minimum Alt D10.0 <b>2700'</b> (1988')	MDA(H) <b>1100'</b> (388')	Apt Elev <b>712'</b>	
MISSED APCH: Turn RIGHT climb on R-210 to 2700' and contact ATC.					2100'
Alt Set: hPa (IN on req) Apt Elev: 26 hPa Trans level: FL 50 Trans alt: 3000'(2288')					



				ALS	2700'	LA
				VASI	on	112.7
					RT	R-210

JAR-OPS STRAIGHT-IN LANDING RWY 18R			CIRCLE-TO-LAND	
MDA(H) <b>1100'</b> (388')				
		ALS out	Max Kts	
A	RVR 1300m	RVR 1500m	100	MDA(H) 1300' (588') VIS 1500m
B	RVR 1400m	RVR 1800m	135	1300' (588') 1600m
C	RVR 1600m	RVR 2000m	180	1400' (688') 2400m
D	RVR 1800m		205	1500' (788') 3600m

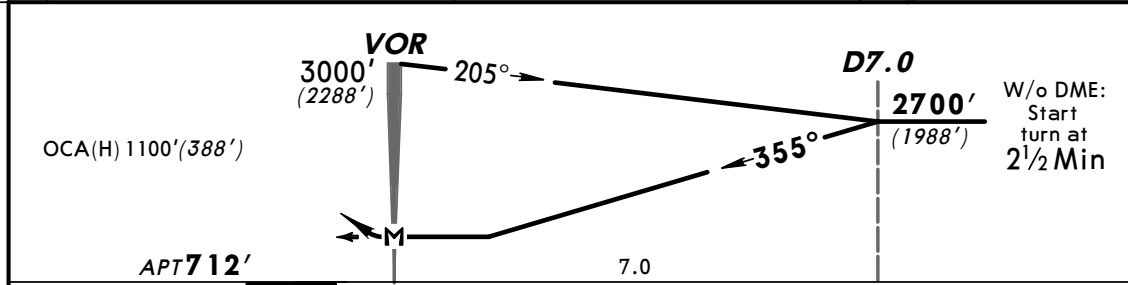
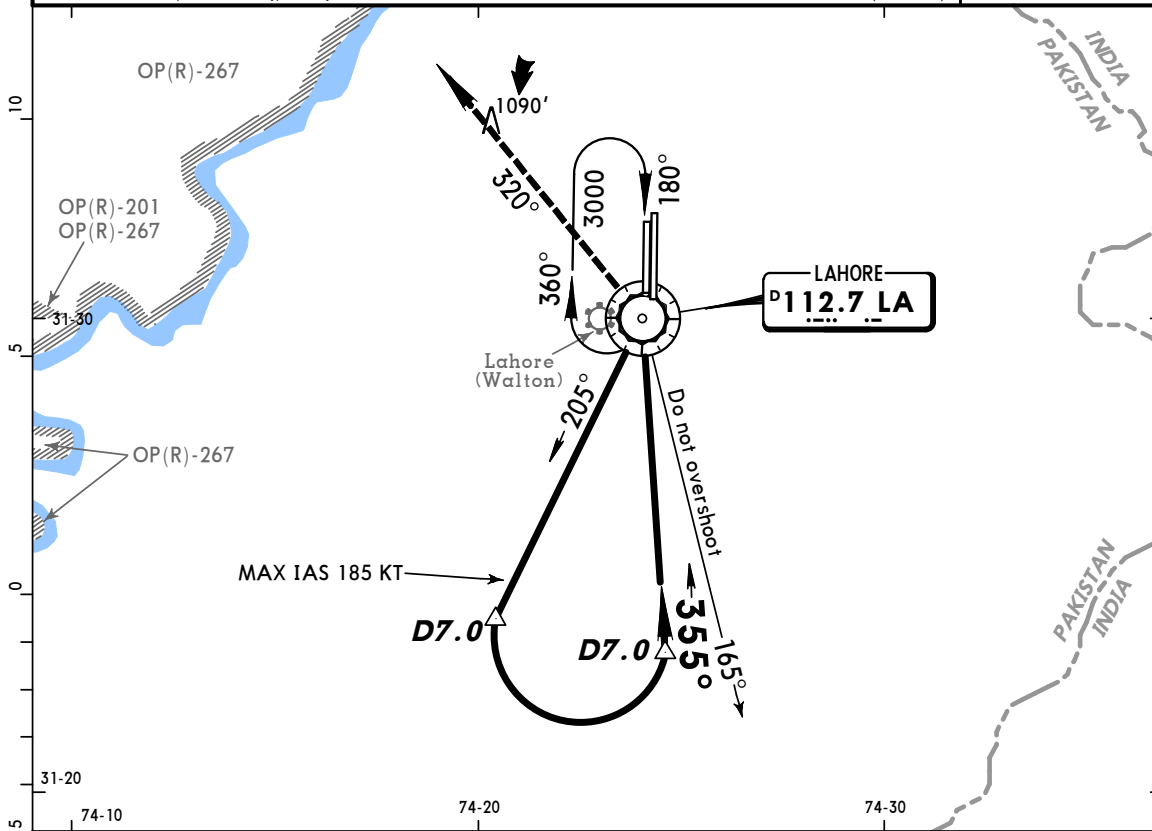
CHANGES: Apt name. Minimums. New chart format.

**OPLA**  
LAHORE INTL

**JEPPESEN**  
11 AUG 00 (13-5)

**LAHORE, PAKISTAN**  
VOR DME or VOR ALPHA Rwy 36L

ATIS <b>126.3</b>		LAHORE Approach <b>121.3</b>		LAHORE Tower <b>118.1</b>	Ground <b>121.8</b>
VOR LA <b>112.7</b>	Final Apch Crs <b>355°</b>	Minimum Alt <b>D7.0</b> <b>2700'</b> (1988')	MDA(H) <b>1100'</b> (388')	Apt Elev <b>712'</b>	
MISSED APCH: Turn LEFT climb on R-320 to 2700' and contact ATC.					2100'
Alt Set: hPa (IN on req) Apt Elev: 26 hPa Trans level: FL 50 Trans alt: 3000'(2288')					



				ALS REIL PAPI	2700' on 112.7 LT R-320
MAP at VOR					

JAR-OPS STRAIGHT-IN LANDING RWY 36L			CIRCLE-TO-LAND	
MDA(H) <b>1100'</b> (388')			Max Kts	VIS
A	RVR 1300m	ALS out RVR 1500m	100	1300' (588') 1500m
B	RVR 1400m	RVR 1500m	135	1300' (588') 1600m
C	RVR 1600m	RVR 1800m	180	1400' (688') 2400m
D	RVR 1800m	RVR 2000m	205	1500' (788') 3600m

**OPLA**  
LAHORE INTL

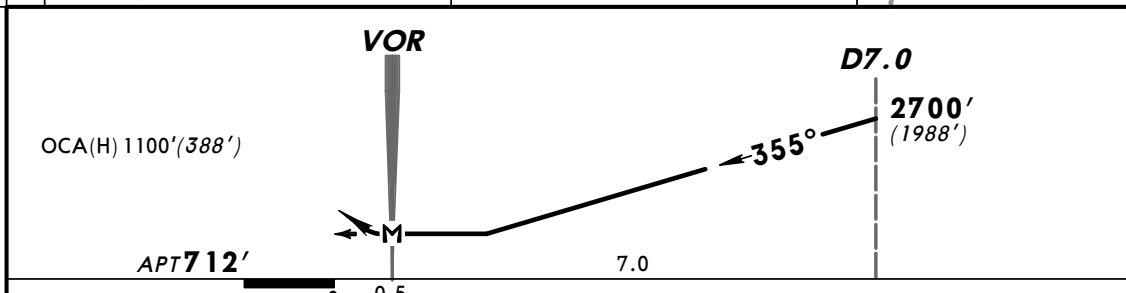
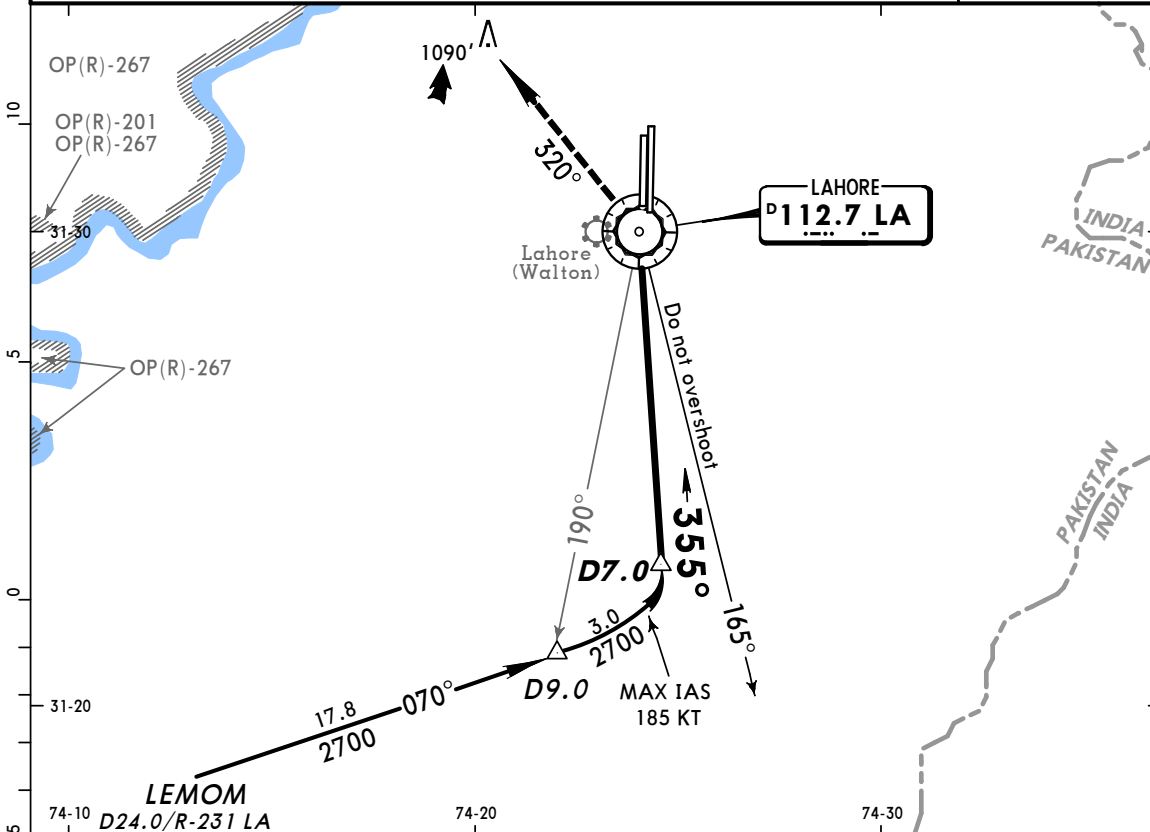
**JEPPESEN**

**LAHORE, PAKISTAN**

11 AUG 00 (13-6)

**VOR DME BRAVO Rwy 36L**

ATIS <b>126.3</b>		LAHORE Approach <b>121.3</b>		LAHORE Tower <b>118.1</b>		Ground <b>121.8</b>	
VOR LA <b>112.7</b>	Final Apch Crs <b>355°</b>	Minimum Alt <b>D7.0</b> <b>2700'</b> (1988')	MDA(H) <b>1100'</b> (388')	Apt Elev <b>712'</b>		2100'	
MISSED APCH: Turn LEFT climb on R-320 to 2700' and contact ATC.							
Alt Set: hPa (IN on req)		Apt Elev: 26 hPa	Trans level: FL 50	Trans alt: 3000' (2288')		MSA LA VOR	



MAP at VOR				ALS	2700'	LA
				REIL	on	112.7
				PAPI	LT	R-320

PANS OPS	STRAIGHT-IN LANDING RWY 36L			CIRCLE-TO-LAND		
	MDA(H) 1100' (388')			Max Kts	MDA(H)	VIS
A	RVR 1300m	ALS out	RVR 1500m	100	1300' (588')	1500m
B	RVR 1400m			135	1300' (588')	1600m
C	RVR 1600m			180	1400' (688')	2400m
D	RVR 1800m			205	1500' (788')	3600m

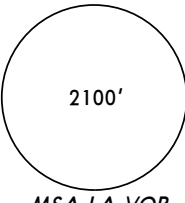
**OPLA**  
LAHORE INTL

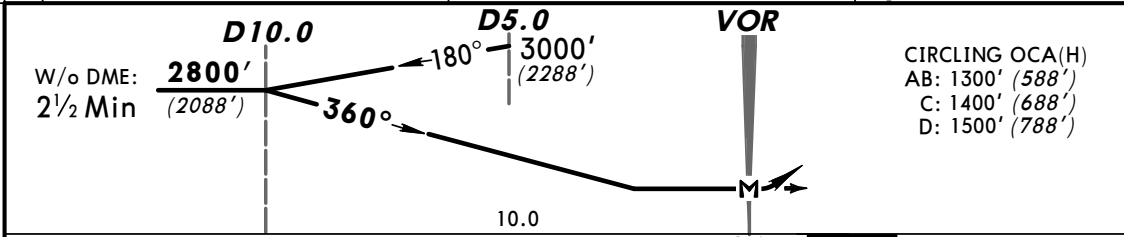
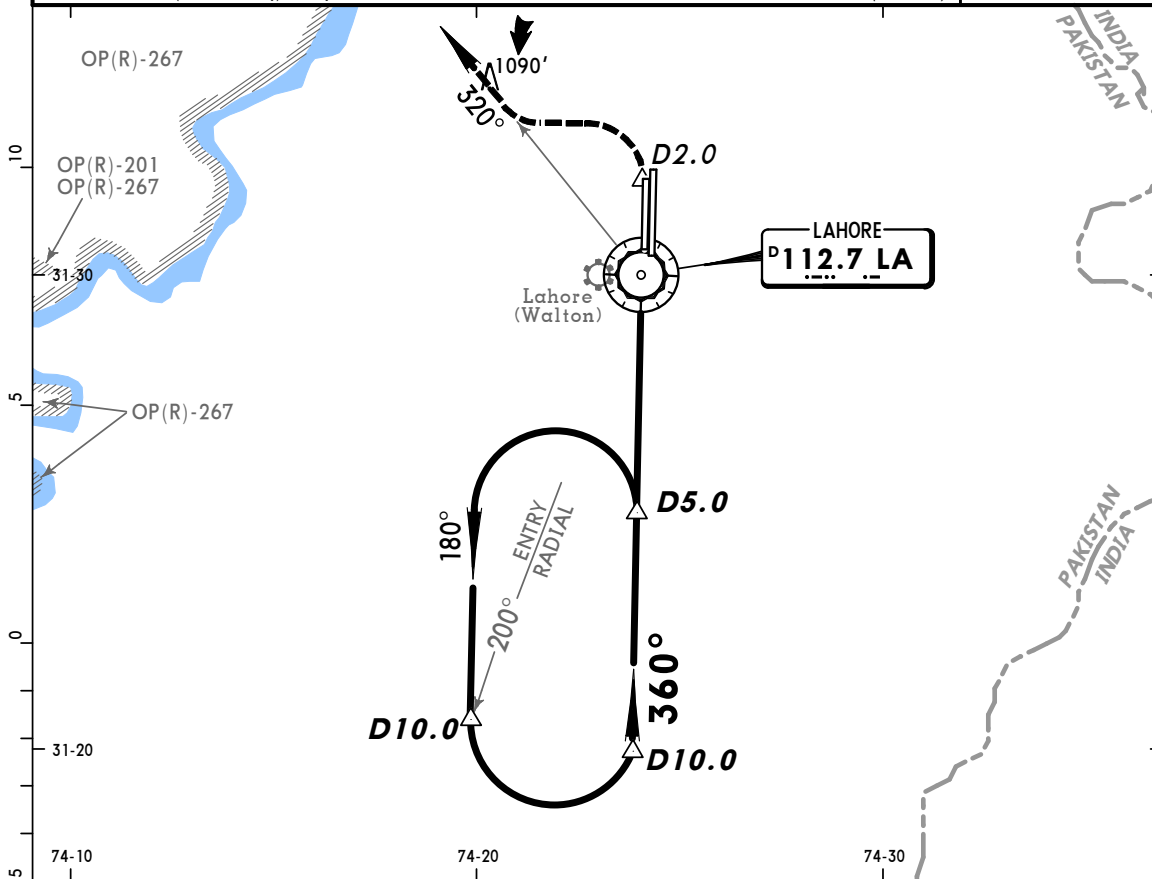
**JEPPESEN**

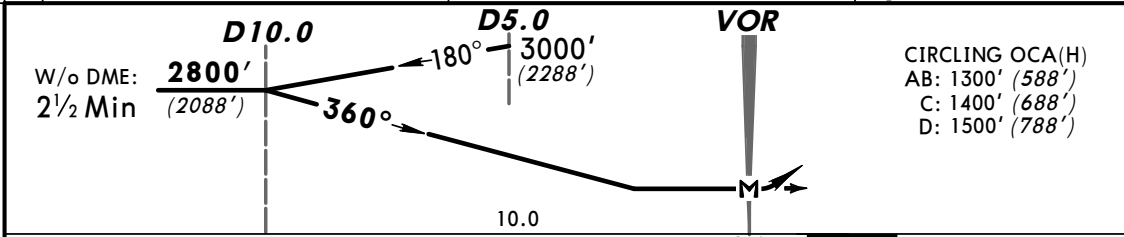
**LAHORE, PAKISTAN**

11 AUG 00 (13-7)

**VOR DME ALPHA Rwy 36R**

ATIS <b>126.3</b>		LAHORE Approach <b>121.3</b>		LAHORE Tower <b>118.1</b>	Ground <b>121.8</b>
VOR LA <b>112.7</b>	Final Apch Crs <b>360°</b>	Minimum Alt <b>D10.0</b> <b>2800'</b> (2088')	MDA(H) Refer to Minimums	Apt Elev <b>712'</b>	
<b>MISSED APCH: Climb STRAIGHT AHEAD to D2.0, then turn LEFT to intercept R-320 outbound VOR, climb to 2800' and contact ATC.</b>					
Alt Set: hPa (IN on req) Apt Elev: 26 hPa Trans level: FL 50 Trans alt: 3000'(2288')					



W/o DME: 2 1/2 Min	<b>D10.0</b> <b>2800'</b> (2088')	<b>D5.0</b> <b>3000'</b> (2288')	<b>VOR</b>
			MAP at VOR HIALS PAPI PAPI D2.0 2800' on LA 112.7 R-320

<b>JAR-OPS</b>		STRAIGHT-IN LANDING		CIRCLE-TO-LAND	
PANS OPS	A	NOT APPLICABLE	Max Kts	MDA(H)	VIS
	B		100	<b>1300'</b> (588')	1500m
	C		135	<b>1300'</b> (588')	1600m
	D		180	<b>1400'</b> (688')	2400m
			205	<b>1500'</b> (788')	3600m

**OPLA**  
LAHORE INTL

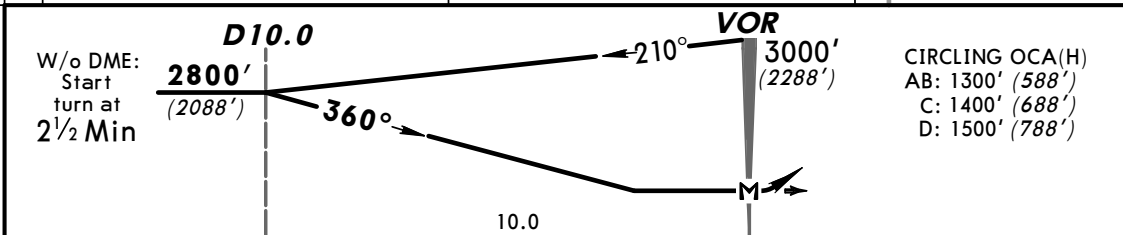
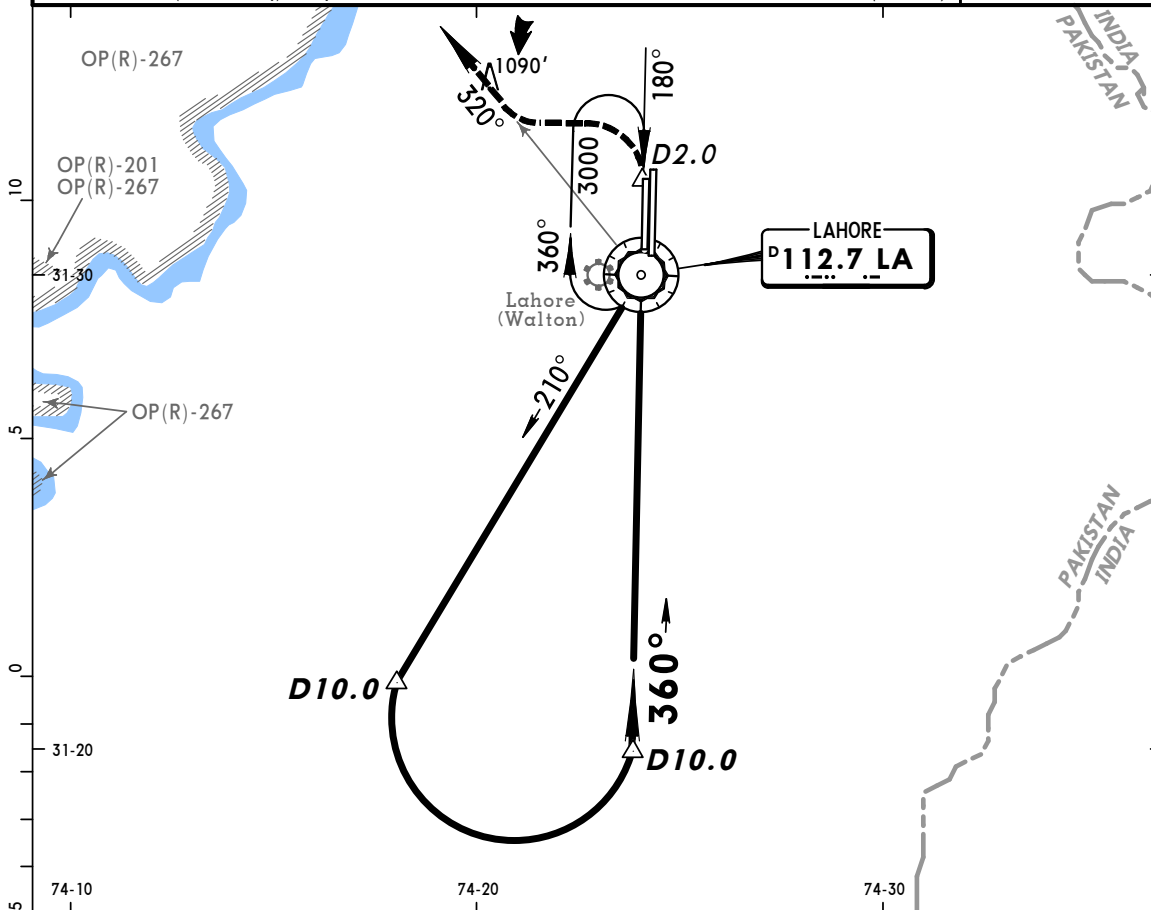
**JEPPESEN**

**LAHORE, PAKISTAN**

11 AUG 00 (13-8)

**VOR DME BRAVO Rwy 36R**

ATIS 126.3		LAHORE Approach 121.3		LAHORE Tower 118.1	Ground 121.8
VOR LA <b>112.7</b>	Final Apch Crs <b>360°</b>	Minimum Alt <b>D10.0</b> <b>2800'</b> (2088')	MDA(H) Refer to Minimums	Apt Elev <b>712'</b>	
<b>MISSED APCH: Climb STRAIGHT AHEAD to D2.0, then turn LEFT to intercept R-320 outbound VOR, climb to 2800' and contact ATC.</b>					
Alt Set: hPa (IN on req) Apt Elev: 26 hPa Trans level: FL 50 Trans alt: 3000'(2288')					



MAP at VOR				HIALS	D2.0	2800'	LA
JAR-OPS				PAPI	↑	on	112.7
STRAIGHT-IN LANDING				CIRCLE-TO-LAND			
NOT APPLICABLE				R-320			

PANS OPS	A	B	C	D	Max Kts.	MDA(H)	VIS
					100	1300' (588')	1500m
				135	1300' (588')	1600m	
				180	1400' (688')	2400m	
				205	1500' (788')	3600m	

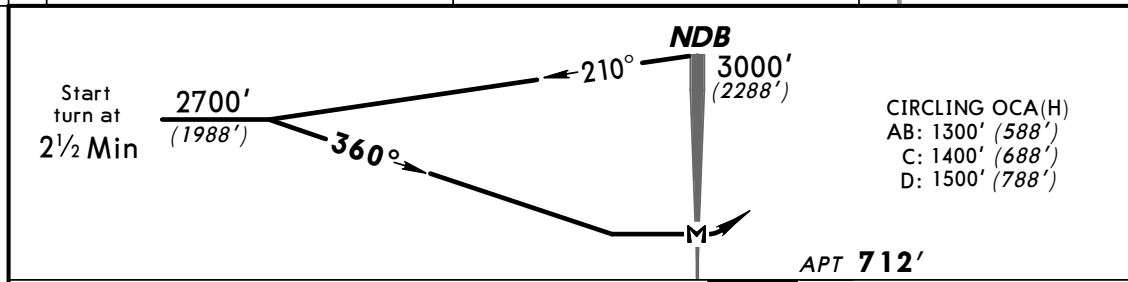
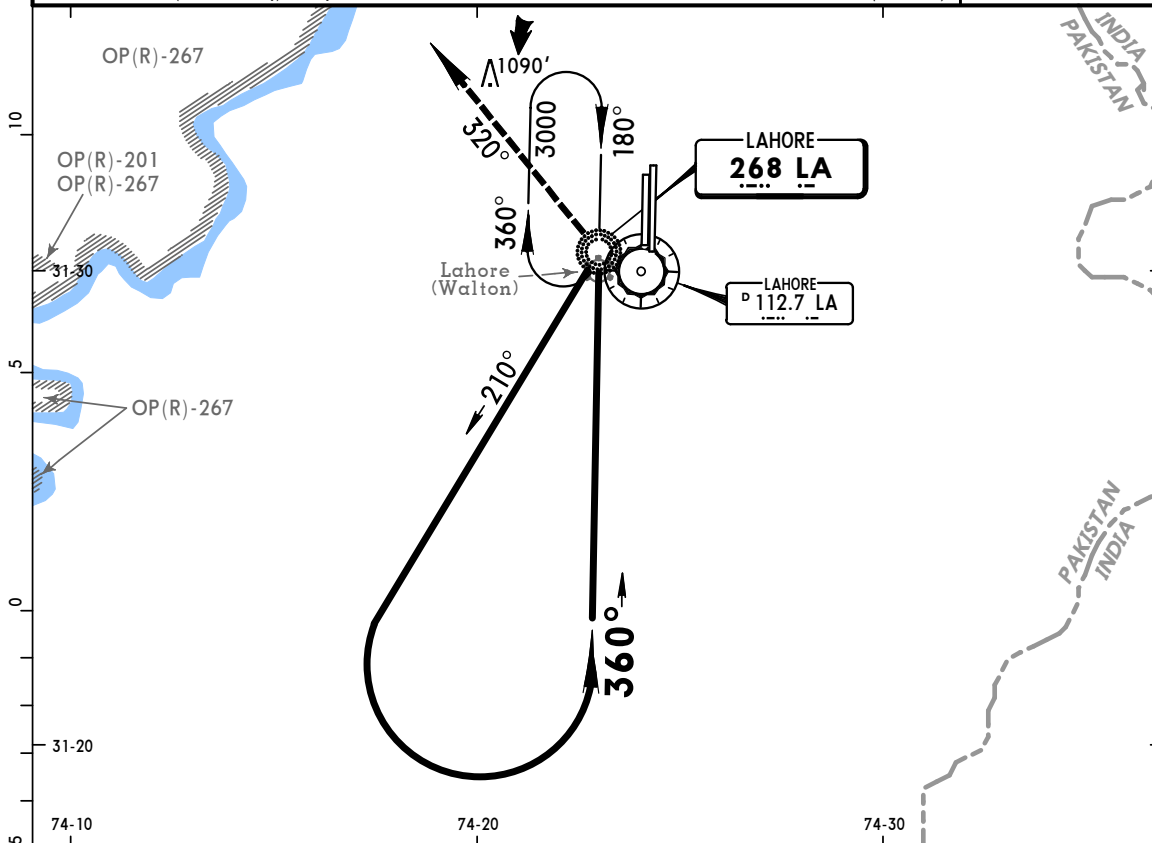
**OPLA**  
LAHORE INTL

**JEPPESEN**

11 AUG 00 (16-1)

**LAHORE, PAKISTAN**  
NDB Rwy 36L

ATIS <b>126.3</b>		LAHORE Approach <b>121.3</b>		LAHORE Tower <b>118.1</b>		Ground <b>121.8</b>
NDB LA <b>268</b>	Final Apch Crs <b>360°</b>	Minimum Alt No FAF	MDA(H) Refer to Minimums	Apt Elev <b>712'</b>		2100'
<b>MISSED APCH: Turn LEFT on track 320° climbing to 2700' and contact ATC.</b>						
Alt Set: hPa (IN on req) Apt Elev: 26 hPa Trans level: FL 50 Trans alt: 3000'(2288')						MSA LA NDB



					ALS	2700'	on 320°
					REIL		
					PAPI	LT	
MAP at NDB							

STRAIGHT-IN LANDING		CIRCLE-TO-LAND	
	Max Kts	MDA(H)	VIS
A	100	<b>1300'</b> (588')	1500m
B	135	<b>1300'</b> (588')	1600m
C	180	<b>1400'</b> (688')	2400m
D	205	<b>1500'</b> (788')	3600m

NOT APPLICABLE

PANS OPS



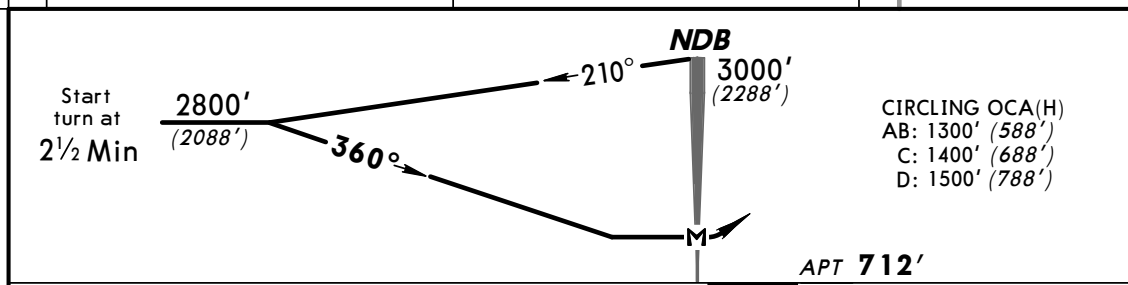
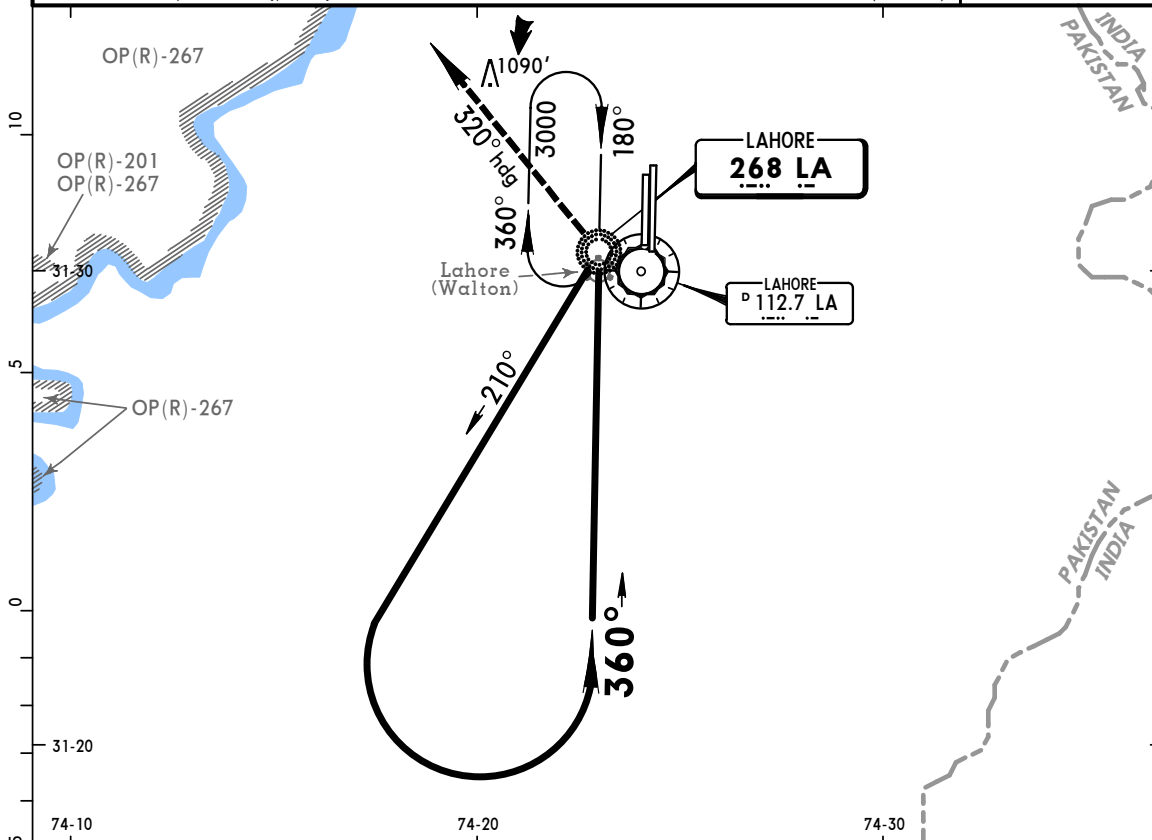
**OPLA**  
LAHORE INTL


**JEPPESEN**

11 AUG 00 (16-2)

**LAHORE, PAKISTAN**  
NDB Rwy 36R

BRIEFING STRIP™	ATIS	LAHORE Approach		LAHORE Tower	Ground
	126.3	121.3		118.1	121.8
	NDB LA <b>268</b>	Final Apch Crs <b>360°</b>	Minimum Alt No FAF	MDA(H) Refer to Minimums	Apt Elev <b>712'</b>
MISSED APCH: Turn LEFT on heading 320° climbing to 2800' and contact ATC.					
Alt Set: hPa (IN on req) Apt Elev: 26 hPa Trans level: FL 50 Trans alt: 3000'(2288')					MSA LA NDB



					HIALS PAPI PAPI 	2800' on LT   320° hdg
--	--	--	--	--	---	---------------------------

MAP at NDB		STRAIGHT-IN LANDING		CIRCLE-TO-LAND	
JAR-OPS		NOT APPLICABLE		Max Kts	MDA(H) VIS
A				100	<b>1300'</b> (588') 1500m
B				135	<b>1300'</b> (588') 1600m
C				180	<b>1400'</b> (688') 2400m
D				205	<b>1500'</b> (788') 3600m

PANS OPS



ERROR: syntaxerror  
OFFENDING COMMAND: --nostringval--

STACK:

/Title  
( )  
/Subject  
(D:20080306223229+01'00')  
/ModDate  
( )  
/Keywords  
(PDFCreator Version 0.9.5)  
/Creator  
(D:20080306223229+01'00')  
/CreationDate  
(maurizio)  
/Author  
-mark-