

Page 1

Changed chart(s) since Disc 21-2010

ADD = Added chart, REV = Revised chart, DEL = Deleted chart.

| ACT | PROCEDURE IDENT | INDEX | REV DATE | EFF DATE |
|-----|-----------------|-------|----------|----------|
|-----|-----------------|-------|----------|----------|

No revision activity since Disc 21-2010

**TERMINAL CHART NOTAMs**

**No Chart NOTAMs for Airport VAGO**

## General Info

Goa, IND

N 15° 22.8' E 73° 50.0' Mag Var: 1.6°W

Elevation: 150'

Public, Military, IFR, Control Tower, Rotating Beacon, Customs,

Landing Fee

Fuel: Jet

Time Zone Info: Calcutta, New Delhi Time GMT+5:30 no DST

## Runway Info

Runway 08-26 11253' x 148' asphalt

Runway 08 (81.0°M) TDZE 110'

Lights: Edge, Part time

Stopway Distance 492'

Runway 26 (261.0°M) TDZE 183'

Lights: Edge, ALS, Part time

Stopway Distance 673'

## Communications Info

ATIS **126.6**

Dabolim Tower **118.1** Military

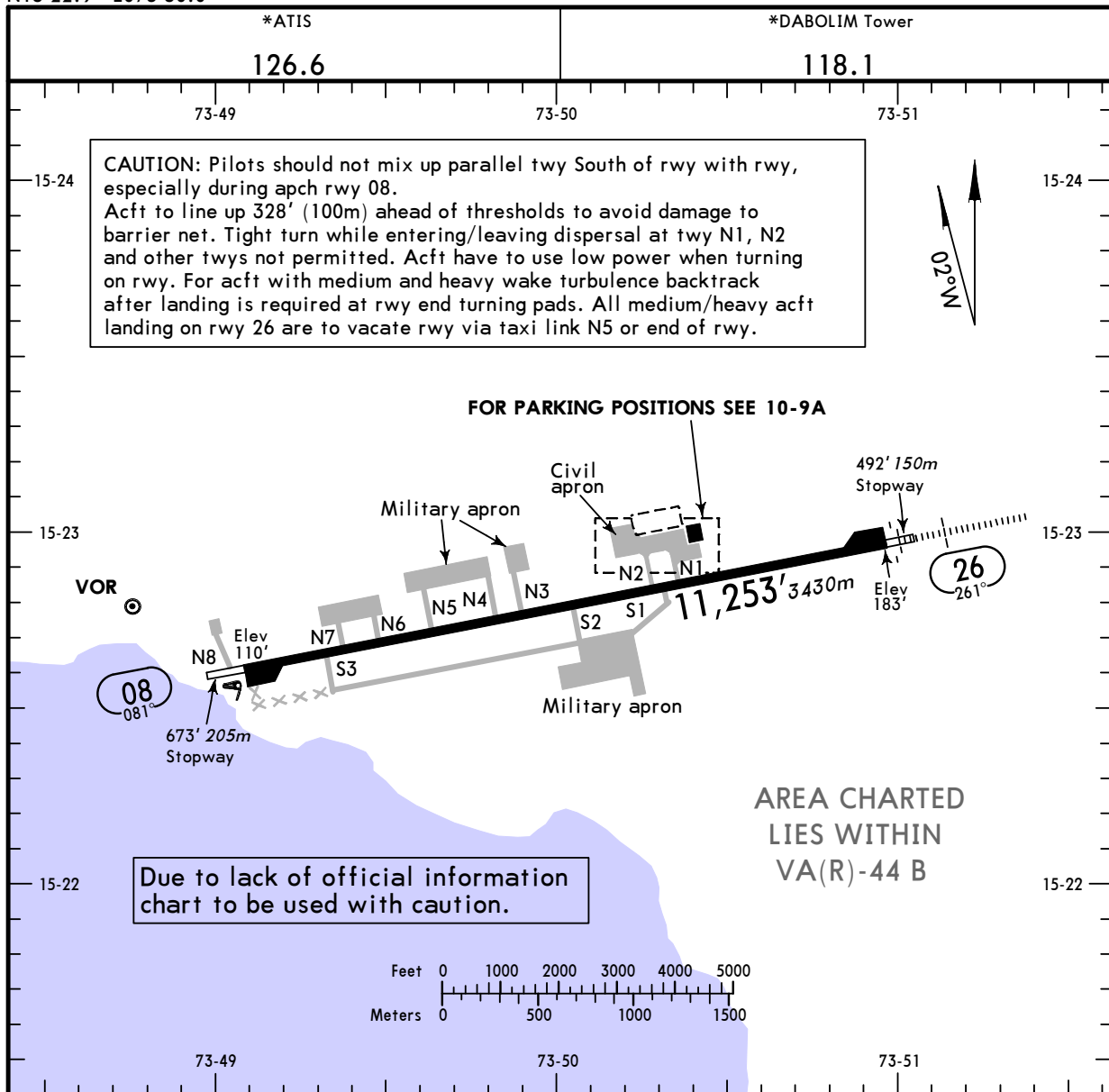
Dabolim Approach Control **119.7** Military

## Notebook Info

**VAGO/GOI**  
Apt Elev **150'**  
N15 22.9 E073 50.0

**JEPPESEN**  
24 SEP 10 **(10-9)**

**GOA, INDIA**  
**DABOLIM NAVY**



| RWY | ADDITIONAL RUNWAY INFORMATION |  | USABLE LENGTHS |               | WIDTH    |
|-----|-------------------------------|--|----------------|---------------|----------|
|     |                               |  | LANDING BEYOND |               |          |
|     |                               |  | Threshold      | Glide Slope   | TAKE-OFF |
| 08  | HIRL PAPI (angle 3.1°)        |  |                |               | 148'     |
| 26  | HIRL ALSF-I PAPI (angle 3.1°) |  |                | 10,147' 3093m | 45m      |
|     |                               |  |                |               |          |
|     |                               |  |                |               |          |
|     |                               |  |                |               |          |

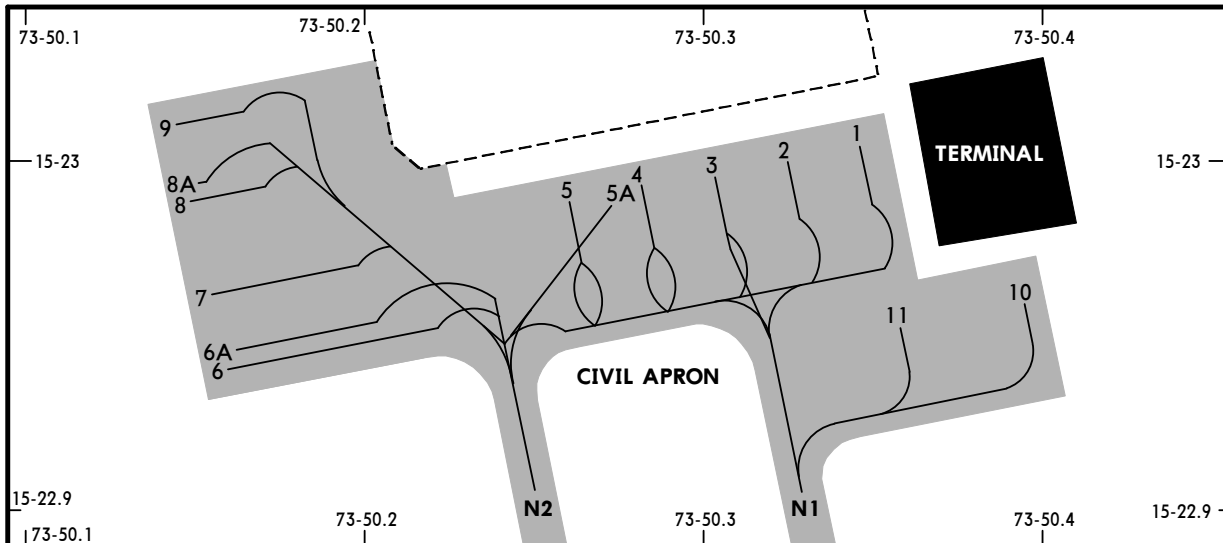
| TAKE-OFF   |                                |                  |                                  |   |
|--|--------------------------------|------------------|----------------------------------|---|
| All Rwys   |                                |                  |                                  |   |
| Authorized Operators<br>Low Visibility Take-off Operations |                                |                  |                                  | Normal Minimums   |
| HIRL, CL & multiple RVR req                                | HIRL, CL or RCLM & TDZ RVR req | HIRL, CL or RCLM | RWY markings and RCLM (Day only) |   |
| A  |                                |                  |                                  | Take-off minimums shall be greater than or equal to landing minimums. |
| B  | RVR 200m                       | RVR 350m         | VIS 500m                         |   |
| C  |                                |                  | VIS 800m                         |   |
| D  |                                |                  |                                  |   |

VAGO/GOI



**GOA, INDIA**  
DABOLIM NAVY

24 SEP 10 (10-9A)



**INS COORDINATES**

| STAND No. | COORDINATES        |
|-----------|--------------------|
| 1 thru 5A | N15 23.0 E073 50.3 |
| 6, 6A     | N15 22.9 E073 50.2 |
| 7         | N15 23.0 E073 50.2 |
| 8, 8A, 9  | N15 23.0 E073 50.1 |
| 10, 11    | N15 23.0 E073 50.4 |

Entry to stands 1 thru 5 via twy N1 or N2.  
 Entry to stands 5A thru 9 via twy N2.  
 Entry to stands 10 and 11 via twy N1.  
 Exit from stands 1, 2, 10 and 11 via twy N1.  
 Exit from stands 3 thru 5 via twy N1 or N2.  
 Exit from stands 5A thru 9 via twy N2.  
 Stands 1 thru 9 push-back required.

**VAGO/GOI**



**Standard**  
**GOA, INDIA**  
**DABOLIM NAVY**

| STRAIGHT-IN RWY |           | A                    | B                    | C                    | D                    |
|-----------------|-----------|----------------------|----------------------|----------------------|----------------------|
| 08              | VOR DME ① | 600' (490')<br>2400m | 600' (490')<br>2400m | 600' (490')<br>2800m | 600' (490')<br>3600m |
|                 | VOR       | 700' (590')<br>2900m | 700' (590')<br>2900m | 700' (590')<br>3200m | 700' (590')<br>3600m |
| 26              | ILS       | 561' (378')<br>1600m | 561' (378')<br>1600m | 561' (378')<br>1600m | 561' (378')<br>1600m |
|                 | ALS out   | 2000m                | 2000m                | 2000m                | 2000m                |
|                 | LOC ①     | 650' (467')<br>2000m | 650' (467')<br>2000m | 650' (467')<br>2400m | 650' (467')<br>3200m |
|                 | ALS out   | 2400m                | 2400m                | 2800m                | 3600m                |
|                 | VOR DME ① | 650' (467')<br>2000m | 650' (467')<br>2000m | 650' (467')<br>2400m | 650' (467')<br>3200m |
|                 | ALS out   | 2400m                | 2400m                | 2800m                | 3600m                |
|                 | VOR ①     | 700' (517')<br>2000m | 700' (517')<br>2000m | 700' (517')<br>2400m | 700' (517')<br>3200m |
|                 | ALS out   | 2600m                | 2600m                | 2800m                | 3600m                |

① Continuous Descent Final Approach.

| CIRCLE-TO-LAND | 100 KT                 | 135 KT                 | 180 KT                | 205 KT                |
|----------------|------------------------|------------------------|-----------------------|-----------------------|
|                | 700' (550') ②<br>3600m | 700' (550') ②<br>3600m | 1050' (900')<br>4800m | 1050' (900')<br>5000m |

② After VOR 08: MDA(H) 740' (590').

**TAKE-OFF RWY 08, 26**

| Authorized Operators<br>Low Visibility Take-off Operations |  | Normal Minimums   |
|--|--|---|
| HIRL,<br>CL or RCLM  | RWY markings<br>and RCLM<br>(DAY only) |   |
| A  | V500m                                  | Take-off minimums shall be greater than or equal to landing minimums. |
| B  |  |   |
| C  |  |   |
| D  |  |   |
|  | V800m                                  |   |

**VAGO/GOI**



**JAA MINIMUMS**

**GOA, INDIA**  
**DABOLIM NAVY**

| STRAIGHT-IN RWY |         | A           | B           | C           | D           |
|-----------------|---------|-------------|-------------|-------------|-------------|
| 08              | VOR DME | 600' (490') | 600' (490') | 600' (490') | 600' (490') |
|                 |         | V2400m      | V2400m      | V2800m      | V3600m      |
|                 | VOR     | 700' (590') | 700' (590') | 700' (590') | 700' (590') |
|                 |         | V2400m      | V2400m      | V3200m      | V3600m      |
| 26              | ILS     | 561' (378') | 561' (378') | 561' (378') | 561' (378') |
|                 |         | 1500m       | 1500m       | 1500m       | 1500m       |
|                 | ALS out | 1900m       | 1900m       | 1900m       | 1900m       |
|                 | LOC     | 650' (467') | 650' (467') | 650' (467') | 650' (467') |
|                 |         | 2000m       | 2000m       | V2400m      | V3200m      |
|                 | ALS out | V2400m      | V2400m      | V2800m      | V3600m      |
|                 | VOR DME | 650' (467') | 650' (467') | 650' (467') | 650' (467') |
|                 |         | 2000m       | 2000m       | V2400m      | V3200m      |
|                 | ALS out | V2400m      | V2400m      | V2800m      | V3600m      |
|                 | VOR     | 700' (517') | 700' (517') | 700' (517') | 700' (517') |
|                 |         | 2000m       | 2000m       | V2400m      | V3200m      |
|                 | ALS out | V2400m      | V2400m      | V2800m      | V3600m      |

| CIRCLE-TO-LAND | 100 KT      | 135 KT      | 180 KT       | 205 KT       |
|----------------|-------------|-------------|--------------|--------------|
|                | 700' (550') | 700' (550') | 1050' (900') | 1050' (900') |
|                | V3600m      | V3600m      | V4800m       | V5000m       |

**TAKE-OFF RWY 08, 26**

|   | Authorized Operators<br>Low Visibility Take-off Operations |                                      |                     |  | Normal Minimums   |
|---|--|--------------------------------------|---------------------|--|---|
|   | HIRL, CL<br>& multiple RVR req                             | HIRL,<br>CL or RCLM<br>& TDZ RVR req | HIRL,<br>CL or RCLM | RWY markings<br>and RCLM<br>(Day only) |   |
| A | RVR 200m   | RVR 350m                             | VIS 500m            | VIS 800m                               | Take-off minimums shall be greater than or equal to landing minimums. |
| B |  |                                      |                     |  |   |
| C |  |                                      |                     |  |   |
| D |  |                                      |                     |  |   |

VAGO/GOI



**Restricted AOM**  
**GOA, INDIA**  
**DABOLIM NAVY**

| STRAIGHT-IN RWY |         | A           | B           | C           | D           |
|-----------------|---------|-------------|-------------|-------------|-------------|
| 08              | VOR DME | 700' (590') | 700' (590') | 700' (590') | 700' (590') |
|                 |         | 2800m       | 2800m       | 3200m       | 4000m       |
|                 | VOR     | 800' (690') | 800' (690') | 800' (690') | 800' (690') |
|                 |         | 2800m       | 2800m       | 4000m       | 4400m       |
| 26              | ILS     | 661' (478') | 661' (478') | 611' (428') | 611' (428') |
|                 |         | 2100m       | 2100m       | 1800m       | 1800m       |
|                 | ALS out | 2500m       | 2500m       | 2200m       | 2200m       |
|                 | LOC     | 750' (567') | 750' (567') | 750' (567') | 750' (567') |
|                 |         | 2400m       | 2400m       | 2800m       | 3600m       |
|                 | ALS out | 2800m       | 2800m       | 3200m       | 4000m       |
|                 | VOR DME | 750' (567') | 750' (567') | 750' (567') | 750' (567') |
|                 |         | 2400m       | 2400m       | 2800m       | 3600m       |
|                 | ALS out | 2800m       | 2800m       | 3200m       | 4000m       |
|                 | VOR     | 800' (617') | 800' (617') | 800' (617') | 800' (617') |
|                 |         | 2400m       | 2400m       | 3200m       | 3600m       |
|                 | ALS out | 2800m       | 2800m       | 3600m       | 4000m       |

| CIRCLE-TO-LAND | 100 KT      | 135 KT      | 180 KT       | 205 KT       |
|----------------|-------------|-------------|--------------|--------------|
|                | 800' (650') | 800' (650') | 1150' (900') | 1150' (900') |
|                | 3600m       | 3600m       | 4800m        | 5000m        |

**TAKE-OFF RWY 08, 26**

A  
B  
C  
D

Take-off minimums shall be greater than or equal to landing minimums.



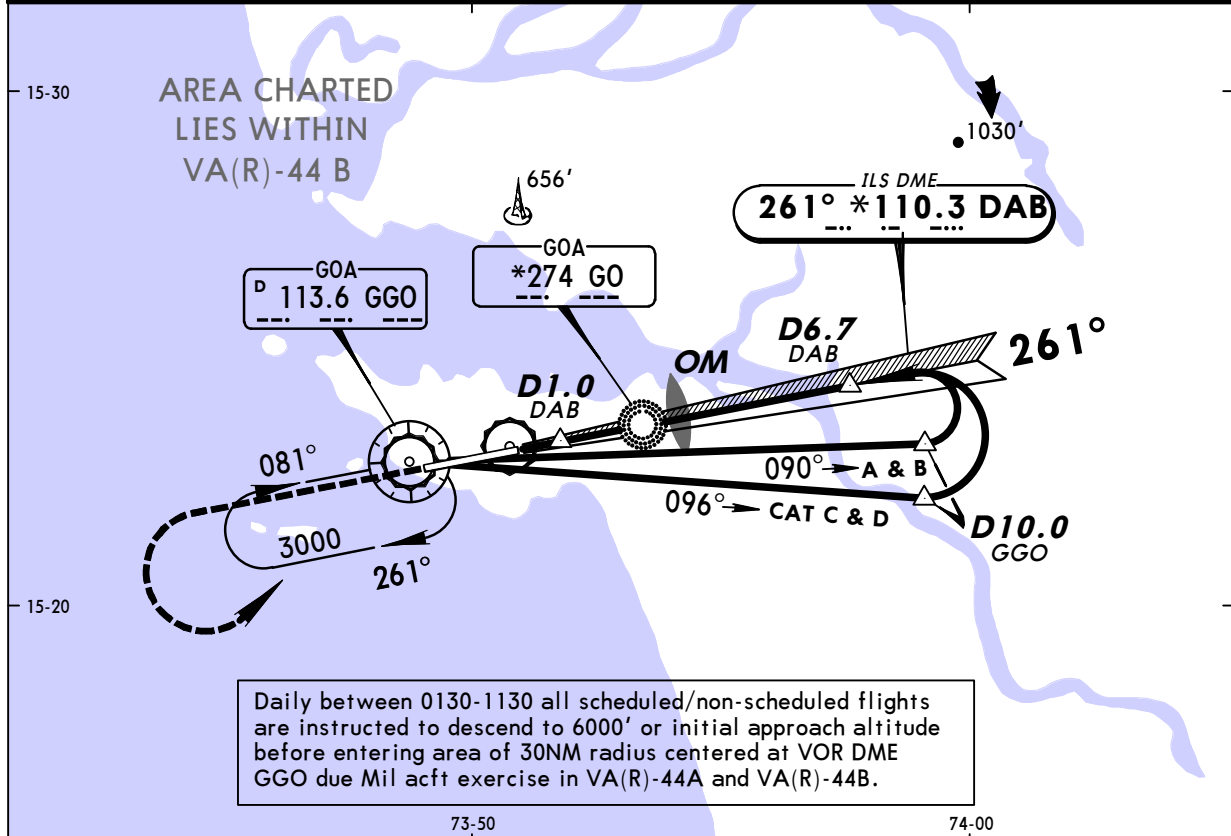
**VAGO/GOI**  
**DABOLIM NAVY**

**JEPPESEN**  
 29 JAN 10 (11-1)

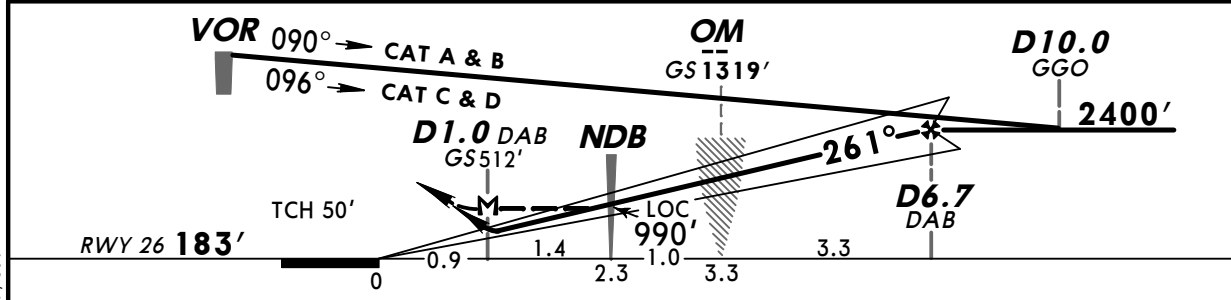
**GOA, INDIA**  
**VOR DME ILS DME Rwy 26**

BRIEFING STRIP™

|  |                                  |                                   |                                    |                                  |                                |             |
|--|----------------------------------|-----------------------------------|------------------------------------|----------------------------------|--------------------------------|-------------|
| *D-ATIS<br><b>126.6</b>  |                                  | *DABOLIM Approach<br><b>119.7</b> |                                    |                                  | *DABOLIM Tower<br><b>118.1</b> |             |
| LOC<br>DAB<br><b>*110.3</b>  | Final<br>Apch Crs<br><b>261°</b> | GS<br>OM<br><b>1319' (1136')</b>  | ILS<br>DA(H)<br><b>561' (378')</b> | Apt Elev 150'<br>RWY <b>183'</b> |                                |             |
| <b>MISSED APCH: Climb STRAIGHT AHEAD to 2000', then turn LEFT climbing to 3000' to join VOR holding, or as directed.</b> |                                  |                                   |                                    |                                  |                                |             |
| Alt Set: hPa   |                                  | Rwy Elev: 7 hPa                   | Trans level: By ATC                |                                  | Trans alt: 5500'               |             |
| Procedure restricted to MAX 185 KT.  |                                  |                                   |                                    |                                  |                                | MSA GGO VOR |



|              |          |      |       |       |       |       |       |
|--------------|----------|------|-------|-------|-------|-------|-------|
| LOC (GS out) | DAB DME  | 2.0  | 3.0   | 4.0   | 5.0   | 6.0   | 6.7   |
|              | ALTITUDE | 840' | 1170' | 1500' | 1830' | 2160' | 2400' |



|                   |       |     |     |     |     |     |                              |
|-------------------|-------|-----|-----|-----|-----|-----|------------------------------|
| Gnd speed-Kts     | 70    | 90  | 100 | 120 | 140 | 160 | ALSF-I<br>PAPI PAPI<br>2000' |
| ILS GS or         | 389   | 500 | 556 | 667 | 778 | 889 |                              |
| LOC Descent angle | 3.10° |     |     |     |     |     |                              |
| MAP at D1.0 DAB   |       |     |     |     |     |     |                              |

|                                 |         |   |         |                         |              |
|---------------------------------|---------|---|---------|-------------------------|--------------|
| STRAIGHT-IN LANDING RWY 26      |         |   |         | CIRCLE-TO-LAND          |              |
| ILS<br>DA(H) <b>561' (378')</b> |         | LOC (GS out)<br>MDA(H) <b>650' (467')</b> |         | Prohibited North of rwy |              |
| FULL                            | ALS out |   | ALS out | Max Kts                 | MDA(H)       |
| A                               |         |   |         | 100                     | 700' (550')  |
| B                               |         | 2000m                                     | 2400m   | 135                     | 3600m        |
| C                               | 1500m   | 1900m                                     | 2400m   | 180                     | 1050' (900') |
| D                               |         |   | 3200m   | 205                     | 4800m        |
|                                 |         |   |         |                         | 5000m        |

PANS OPS 4 Based on NOTAM Class One A 1347/09.

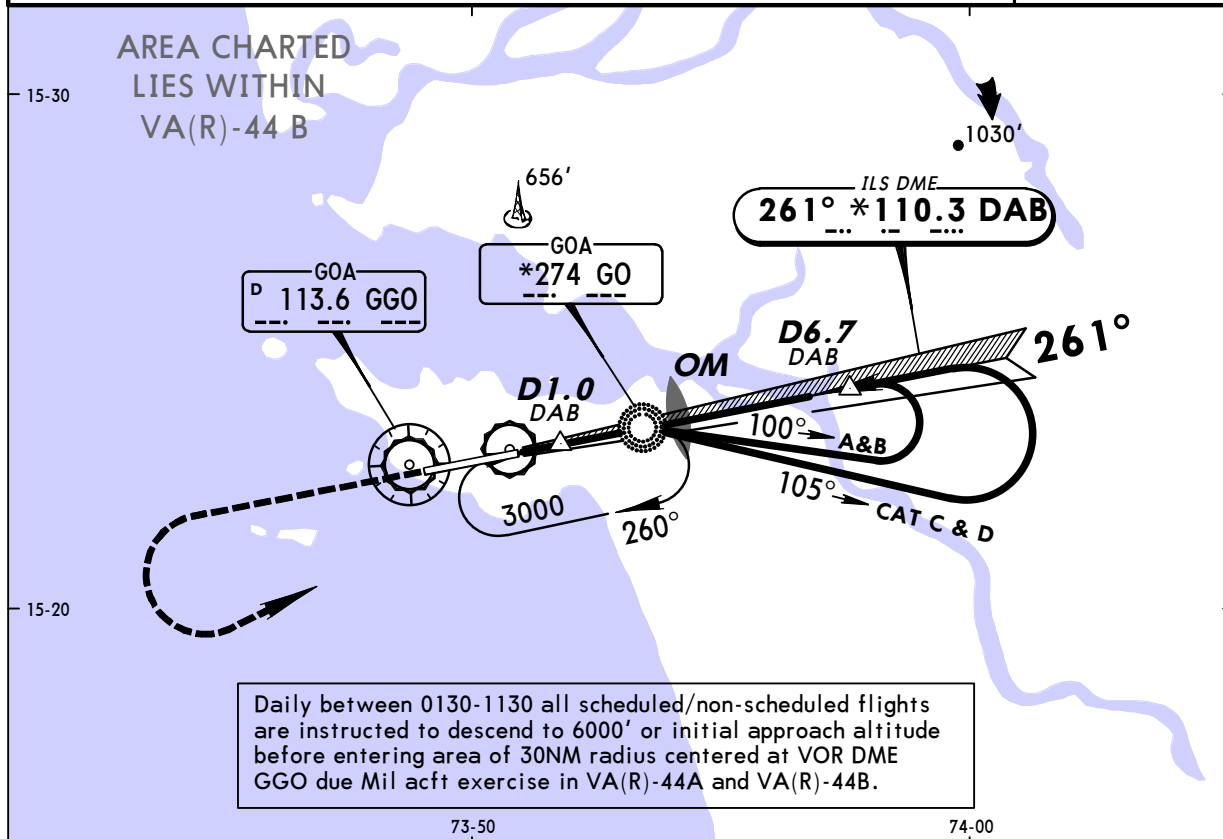
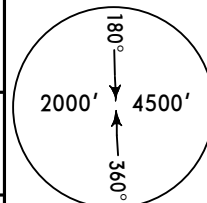
**VAGO/GOI**  
**DABOLIM NAVY**

**JEPPESEN**  
 29 JAN 10 (11-2)

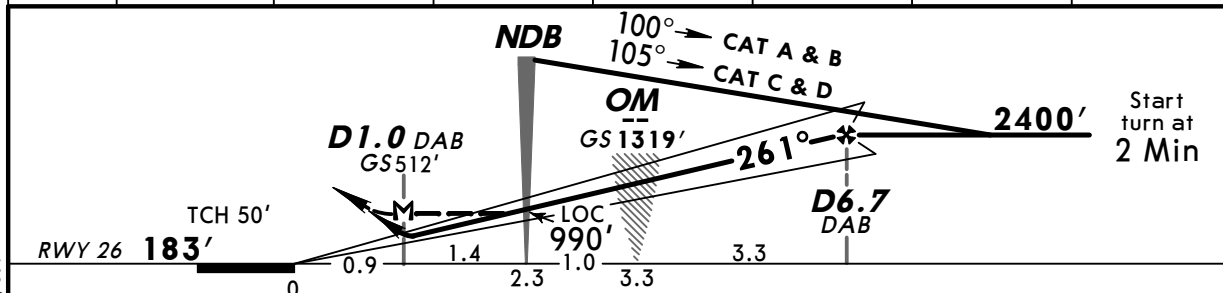
**GOA, INDIA**  
**NDB ILS DME Rwy 26**

BRIEFING STRIP™

|  |                                  |                                   |                                    |                                  |                                |                  |
|--|----------------------------------|-----------------------------------|------------------------------------|----------------------------------|--------------------------------|------------------|
| *D-ATIS<br><b>126.6</b>  |                                  | *DABOLIM Approach<br><b>119.7</b> |                                    |                                  | *DABOLIM Tower<br><b>118.1</b> |                  |
| LOC<br>DAB<br><b>*110.3</b>  | Final<br>Apch Crs<br><b>261°</b> | GS<br>OM<br><b>1319' (1136')</b>  | ILS<br>DA(H)<br><b>561' (378')</b> | Apt Elev 150'<br>RWY <b>183'</b> |                                |                  |
| <b>MISSED APCH: Climb STRAIGHT AHEAD to 2000', then turn LEFT climbing to 3000' to join NDB holding, or as directed.</b> |                                  |                                   |                                    |                                  |                                |                  |
| Alt Set: hPa   |                                  | Rwy Elev: 7 hPa                   |                                    | Trans level: By ATC              |                                | Trans alt: 5500' |
| Procedure restricted to MAX 185 KT.  |                                  |                                   |                                    |                                  |                                | MSA GO NDB       |



|              |          |      |       |       |       |       |       |
|--------------|----------|------|-------|-------|-------|-------|-------|
| LOC (GS out) | DAB DME  | 2.0  | 3.0   | 4.0   | 5.0   | 6.0   | 6.7   |
|              | ALTITUDE | 840' | 1170' | 1500' | 1830' | 2160' | 2400' |



|                   |       |     |     |     |     |     |                              |
|-------------------|-------|-----|-----|-----|-----|-----|------------------------------|
| Gnd speed-Kts     | 70    | 90  | 100 | 120 | 140 | 160 | ALSF-I<br>PAPI PAPI<br>2000' |
| ILS GS or         | 389   | 500 | 556 | 667 | 778 | 889 |                              |
| LOC Descent angle | 3.10° |     |     |     |     |     |                              |
| MAP at D1.0 DAB   |       |     |     |     |     |     |                              |

|   | STRAIGHT-IN LANDING RWY 26 |         |                    |         | CIRCLE-TO-LAND          |              |
|---|----------------------------|---------|--------------------|---------|-------------------------|--------------|
|   | ILS                        |         | LOC (GS out)       |         | Prohibited North of rwy |              |
|   | DA(H) 561' (378')          |         | MDA(H) 650' (467') |         |                         |              |
|   | FULL                       | ALS out |                    | ALS out | Max Kts                 | MDA(H)       |
| A |                            |         |                    |         | 100                     | 700' (550')  |
| B |                            |         | 2000m              | 2400m   | 135                     | 3600m        |
| C | 1500m                      | 1900m   | 2400m              | 2800m   | 180                     | 1050' (900') |
| D |                            |         | 3200m              | 3600m   | 205                     | 5000m        |

PANS OPS 4 Based on NOTAM Class One A 1347/09.

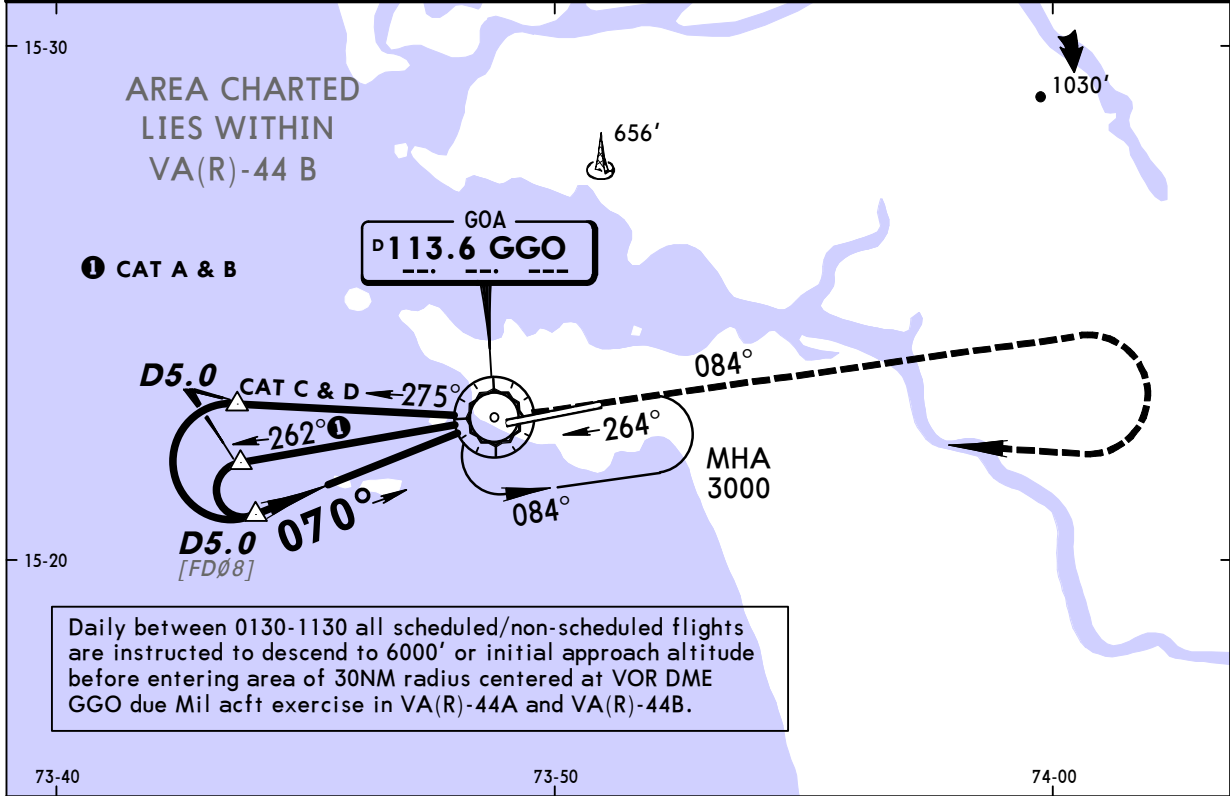
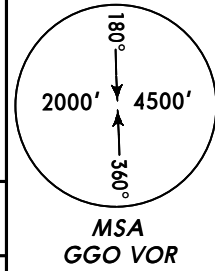
**VAGO/GOI**  
**DABOLIM NAVY**

**JEPPESEN**  
29 JAN 10 (13-1)

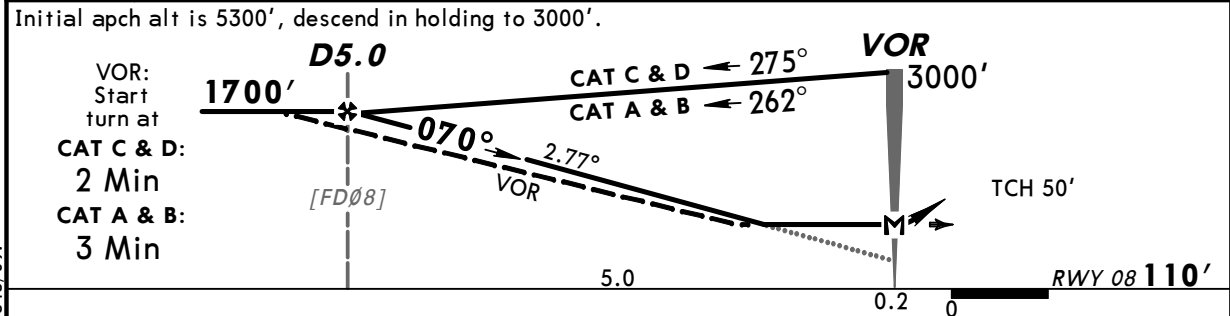
**GOA, INDIA**  
**VOR DME or VOR Rwy 08**

BRIEFING STRIP™

|   |                                  |   |   |                                |  |
|---|----------------------------------|---|---|--------------------------------|--|
| *D-ATIS<br><b>126.6</b>   |                                  | *DABOLIM Approach<br><b>119.7</b>                             |   | *DABOLIM Tower<br><b>118.1</b> |  |
| VOR<br>GGO<br><b>113.6</b>  | Final<br>Apch Crs<br><b>070°</b> | VOR DME<br>Minimum Alt<br><b>D5.0</b><br><b>1700' (1590')</b> | VOR DME<br>MDA(H)<br><b>600' (490')</b> | Apt Elev 150'<br>RWY 110'      |  |
|   |                                  | VOR<br>Minimum Alt<br>No FAF                                  | VOR<br>MDA(H)<br><b>700' (590')</b>     |                                |  |
| <b>MISSED APCH: Climb on 084° to 3000', then turn RIGHT to VOR, or as directed.</b> |                                  |   |   |                                |  |
| Alt Set: hPa  |                                  | Rwy Elev: 4 hPa   |   | Trans level: By ATC            |  |
|   |                                  |   |   | Trans alt: 5500'               |  |



|         |          |       |       |       |      |
|---------|----------|-------|-------|-------|------|
| VOR DME | GGO DME  | 5.0   | 4.0   | 3.0   | 2.0  |
|         | ALTITUDE | 1700' | 1410' | 1120' | 830' |



|                              |     |     |     |     |     |     |      |               |
|------------------------------|-----|-----|-----|-----|-----|-----|------|---------------|
| Gnd speed-Kts                | 70  | 90  | 100 | 120 | 140 | 160 |      |               |
| VOR DME: Descent angle 2.77° | 343 | 441 | 490 | 588 | 686 | 784 |      |               |
| MAP at VOR                   |     |     |     |     |     |     |      |               |
|                              |     |     |     |     |     |     | PAPI | 3000' on 084° |

|                            |       |       |                         |              |       |
|----------------------------|-------|-------|-------------------------|--------------|-------|
| STRAIGHT-IN LANDING RWY 08 |       |       | CIRCLE-TO-LAND          |              |       |
| VOR DME                    |       |       | VOR                     |              |       |
| MDA(H) 600' (490')         |       |       | MDA(H) 700' (590')      |              |       |
|                            |       |       | Prohibited North of rwy |              |       |
| A                          |       |       | Max Kts                 | MDA(H)       |       |
| B                          | 2400m | 2400m | 100                     | 700' (550')  | 3600m |
| C                          | 2800m | 3200m | 135                     | 1050' (900') | 4800m |
| D                          | 3600m | 3600m | 180                     | 1050' (900') | 5000m |
|                            |       |       | 205                     |              |       |

PANS OPS 4 Based on NOTAM Class One A. 1543/09.

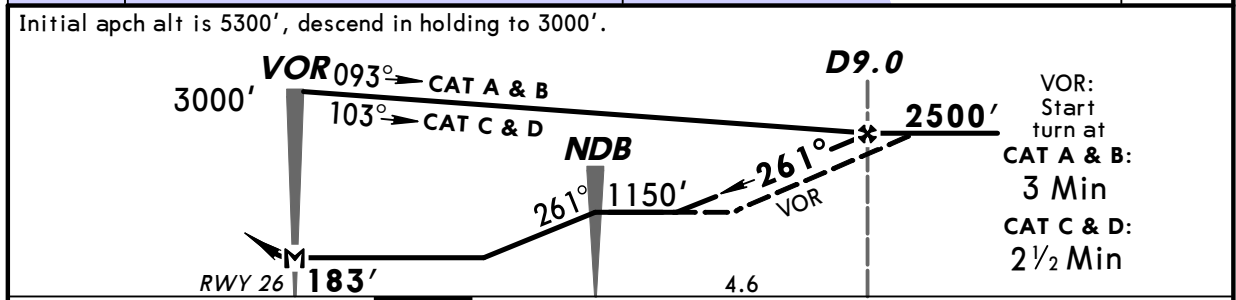
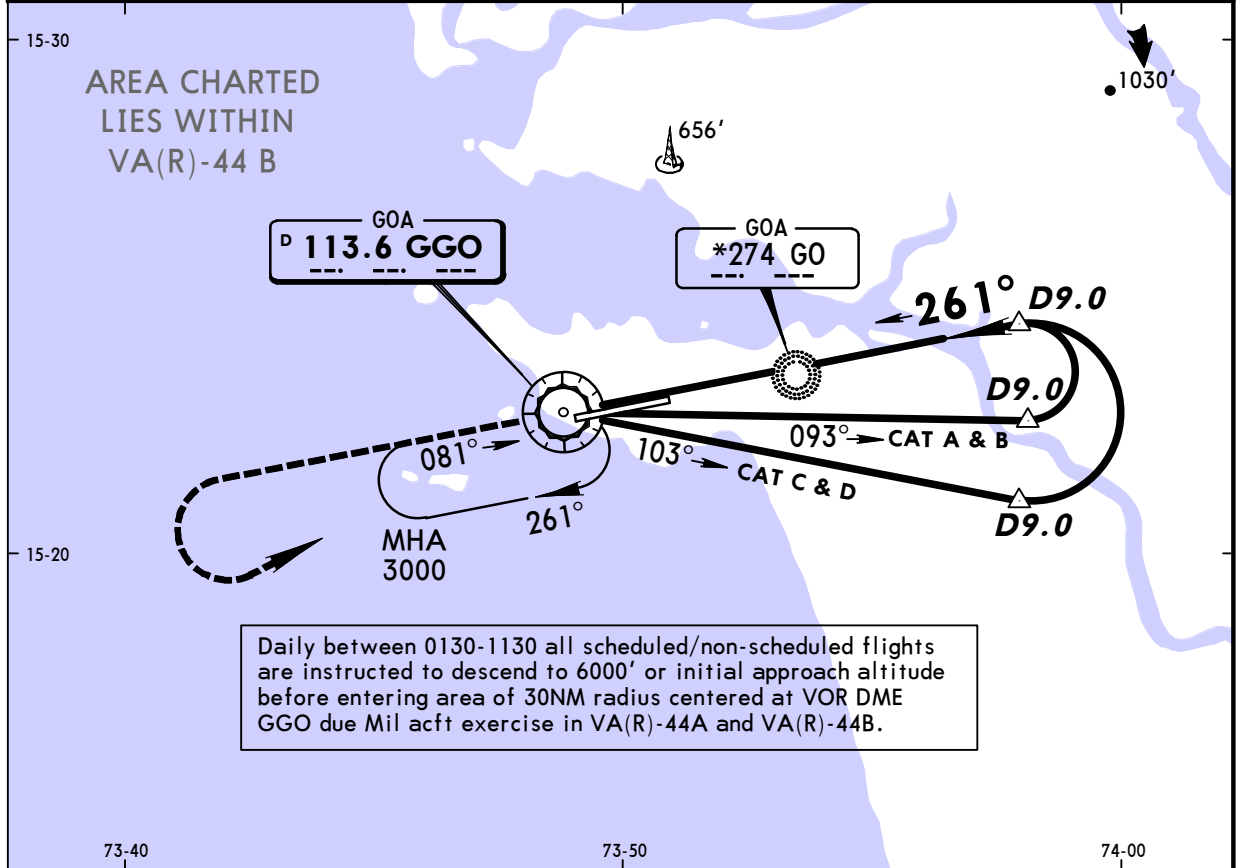
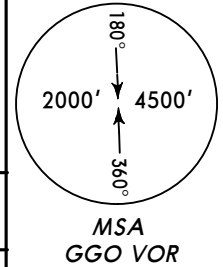
**VAGO/GOI**  
**DABOLIM NAVY**

**JEPPESEN**  
29 JAN 10 (13-2)

**GOA, INDIA**  
**VOR DME or VOR Rwy 26**

BRIEFING STRIP™

|  |                                  |  |   |   |  |
|--|----------------------------------|--|---|---|--|
| *D-ATIS<br><b>126.6</b>  |                                  | *DABOLIM Approach<br><b>119.7</b>                      |   | *DABOLIM Tower<br><b>118.1</b>          |  |
| VOR<br>GGO<br><b>113.6</b>   | Final<br>Apch Crs<br><b>261°</b> | VOR DME<br>Minimum Alt<br>D9.0<br><b>2500' (2317')</b> | VOR DME<br>MDA(H)<br><b>650' (467')</b> | Apt Elev <b>150'</b><br>RWY <b>183'</b> |  |
|  |                                  | VOR<br>Minimum Alt<br>No FAF                           | VOR<br>MDA(H)<br><b>700' (517')</b>     |   |  |
| <b>MISSED APCH: Climb STRAIGHT AHEAD to 2000', then turn LEFT climbing to 3000' to join VOR holding, or as directed.</b> |                                  |  |   |   |  |
| Alt Set: hPa   |                                  | Rwy Elev: 7 hPa  |   | Trans level: By ATC                     |  |
|  |                                  |  |   | Trans alt: 5500'                        |  |



|            |  |  |  |           |       |
|------------|--|--|--|-----------|-------|
|            |  |  |  | ALSF-I    | 2000' |
|            |  |  |  | PAPI PAPI |       |
| MAP at VOR |  |  |  |           |       |

| STRAIGHT-IN LANDING RWY 26 |       |                    |       | CIRCLE-TO-LAND          |                    |
|----------------------------|-------|--------------------|-------|-------------------------|--------------------|
| VOR DME                    |       | VOR                |       | Prohibited North of rwy |                    |
| MDA(H) 650' (467')         |       | MDA(H) 700' (517') |       | MDA(H)                  |                    |
| ALS out                    |       | ALS out            |       | Max Kts                 |                    |
| A                          |       |                    |       | 100                     |                    |
| B                          | 2000m | 2400m              | 2000m | 135                     | 700' (550') 3600m  |
| C                          | 2400m | 2800m              | 2400m | 180                     | 1050' (900') 4800m |
| D                          | 3200m | 3600m              | 3200m | 205                     | 1050' (900') 5000m |

PANS OPS 4 Based on NOTAM Class One A 1506/09.